

# **SOUTH AUSTRALIAN ECONOMIC INDICATORS**

EMBARGO: 11:30AM (CANBERRA TIME) MON 2 FEB 1998

## **C O N T E N T S**

	<i>page</i>
Notes .....	2
<b>REVIEW</b>	
South Australian overview .....	3
State accounts .....	3
International accounts .....	5
Consumption and investment .....	6
Production .....	8
Prices .....	10
Labour force and demography .....	13
Incomes .....	16
Financial markets .....	17
Forward outlook .....	19
<b>FOCUS</b>	
Changes coming for the consumer price index .....	21
<b>TABLES</b>	
List of tables .....	25
<b>ADDITIONAL INFORMATION</b>	
Publications source index .....	49

### **I N Q U I R I E S**

- For further information about these and related statistics, contact Mark Parham on Adelaide (08) 8237 7645, or any ABS office shown on the back cover of this publication.

## NOTES

### FORTHCOMING ISSUES

<i>ISSUE</i>	<i>RELEASE DATE</i>
March 1998	2 March 1998
April 1998	1 April 1998
May 1998	1 May 1998

.....

### ABOUT THIS PUBLICATION

*South Australian Economic Indicators* is a monthly publication which contains the latest available data at the time of preparation for a range of statistical series that have been identified as indicators of economic activity in this State. In a number of cases the figures presented are preliminary and subject to revision in subsequent issues.

.....

### CHANGES IN THIS ISSUE

The number of Manufacturing Production data items have been reduced and tables have been changed from monthly series to quarterly series. The new series have been combined with data on livestock products and now appear in table 15.

.....

### SYMBOLS AND OTHER USAGES

n.a.	not available
n.y.a.	not yet available
*	subject to sampling variability too high for most practical purposes
..	not applicable
0, 0.0	nil or rounded to zero

.....

### ROUNDING

Where figures have been rounded, discrepancies may occur between sums of the component items and totals.

.....

### INFORMATION

More detailed information on each series, including explanatory and technical notes, can be obtained from other Australian Bureau of Statistics publications or alternative data sources. To assist those seeking further information a source publication for each of the series has been documented in the statistical summary.

P. M. Gardner  
Regional Director  
South Australia

# REVIEW

---

## SOUTH AUSTRALIAN OVERVIEW

- The value of merchandise exports, where the final stage of production was in South Australia, was \$450.5m in November 1997.
- The value of merchandise imports released from Customs control in South Australia rose to \$321.8m in November 1997.
- The trend estimate for retail turnover rose by 0.4% in November 1997.
- The trend for total new vehicle registrations increased by 1.8% in November 1997 and has risen for six consecutive months.
- The trend estimate for dwelling unit approvals decreased by 0.4% in November 1997 and has fallen for the sixth consecutive month.
- The total value of building work done during the September quarter 1997 fell by 1.7% to \$349.7m.
- The total value of building work yet to be done was \$309.1m at the end of September quarter 1997, a fall of 20.9% from the previous quarter.
- The value of engineering construction work done for the September quarter 1997 was down 16.9% to \$255.5m.
- In October 1997 there were 8,629 short-term overseas visitor arrivals and 10,694 short-term resident departures from South Australia.
- The trend estimate of the unemployment rate has remained at 9.7% in November 1997 and has been at this level for seven consecutive months.
- In November 1997, employees who worked overtime recorded an average of 6.5 overtime hours per week.
- Total housing finance commitments (original figures including alterations and additions) decreased 4.2% to \$267.1m in November 1997.

## STATE ACCOUNTS

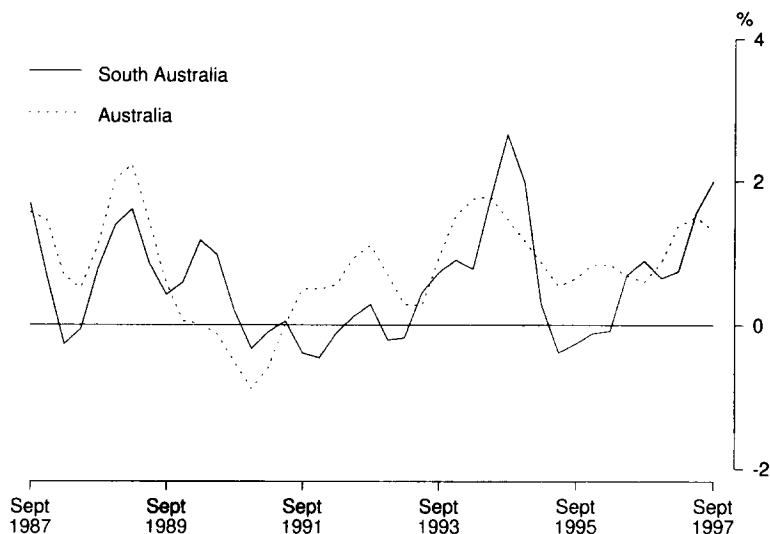
NOTE: The ABS no longer compiles the quarterly publication of State Account estimates (*Australian National Accounts: State Accounts* Cat. No.5242.0), however, some of the information is now provided in a new Standard Data Service entitled *Australian National Accounts: Quarterly State Details* (Cat. No.5206.0.40.001). This information will be available quarterly, usually within one week of the release of the quarterly Australian National Accounts.

### Trend (Constant prices)

State final demand (SFD) increased by 2.0% in the September quarter, the second highest of all States/Territories. The national rate was 1.3%. Growth through the year to September quarter 1997 was 5.1%, approximately the same as the national rate (5.2%). Contributing to the growth in SFD was a 6.3% increase in private gross fixed capital expenditure (due mainly to a 12.8% increase in non-dwelling construction).

Private final consumption expenditure rose 1.9% to be equal highest with the ACT. This continues an upward trend evident since the March quarter 1997 and was the strongest growth rate recorded since March 1995. Growth through the year to September quarter was 3.9% compared with the national rate of 3.3%

State final demand: **Trend** (Constant prices)(a)

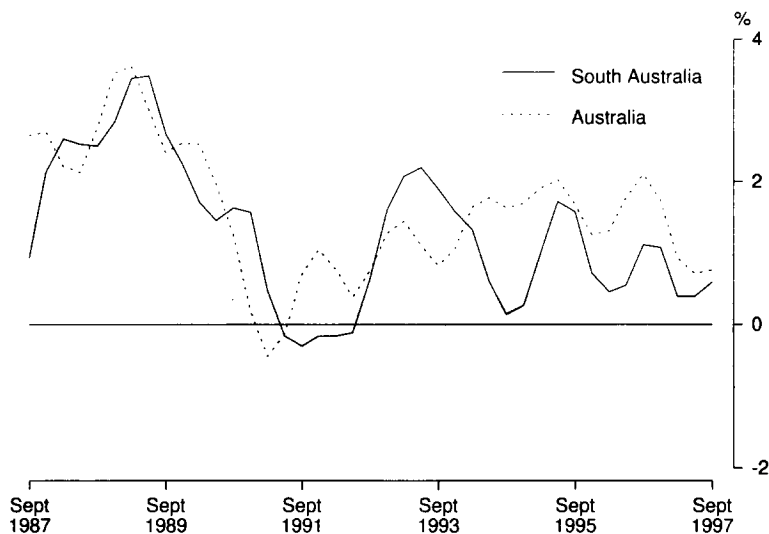


(a) Quarterly changes

Trend (Current prices)

Wages, salaries and supplements grew by 0.6% in the September quarter. Growth through the year to September 1997 was 2.5%, significantly below the national rate of 4.2%. South Australia has now been below the national rate for the past 15 quarters.

Wages, salaries and supplements: **Trend** (Current prices)(a)



(a) Quarterly changes

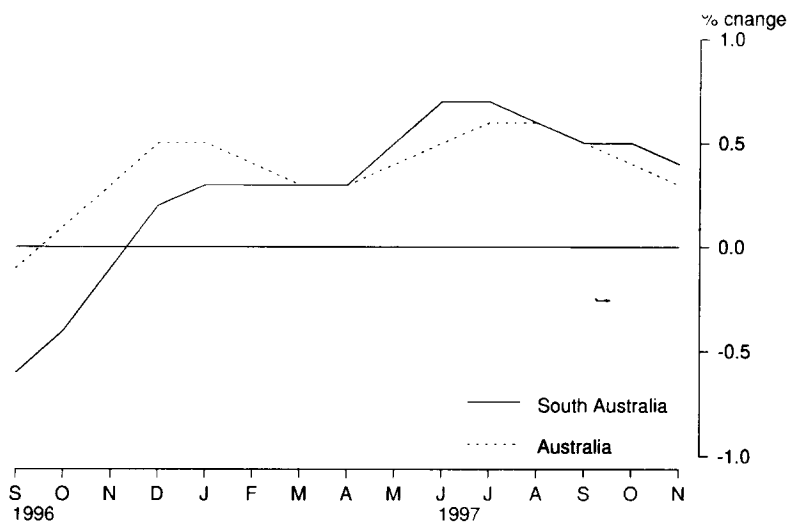
CONSUMPTION AND INVESTMENT

Retail turnover

The trend estimate for retail turnover has eased over the last four months showing a rise of 0.4% in November 1997. The slowing of growth in the trend estimate over the last four months is due mainly to recent easing in the hospitality and services industry.

Over the three months to November 1997 the trend estimate has increased by \$11.5m. The major contributors to this growth were household good retailing (\$7.0m) and food retailing (\$6.7m) which was partly offset by a decrease in hospitality and services (\$9.4m).

Retail turnover: **Trend**



In original terms, South Australian retail turnover was \$856.9m in November 1997, an increase of 5.5% on November 1996. The Australian turnover was \$11,505.2m, an increase of 4.0% over this period period. The South Australian share of the Australian total was 7.4%.

New motor vehicle registrations

The trend for new vehicle registrations rose for the sixth consecutive month, increasing by 1.8% for November 1997. The Australian trend also rose by 1.4% from the previous period and 17.9% from November 1996, the fourteenth month of consecutive increases.

In original terms, the total number of new vehicles registered fell to 4,197 for November 1997. This was the result of both passenger and other vehicle registrations declining, down 3.0% and 4.6% respectively. However, when compared to the same period last year, new vehicle registrations have increased by 19.4%. The leading makers of vehicles registered in South Australia for November 1997 were Holden (780 vehicles), Mitsubishi (632), Ford (554), Toyota (475) and Hyundai (336).

Australian total new vehicle registrations also declined, down 7.8% from October 1997 to 61,460 in November 1997.

INTERNATIONAL ACCOUNTS

Merchandise exports

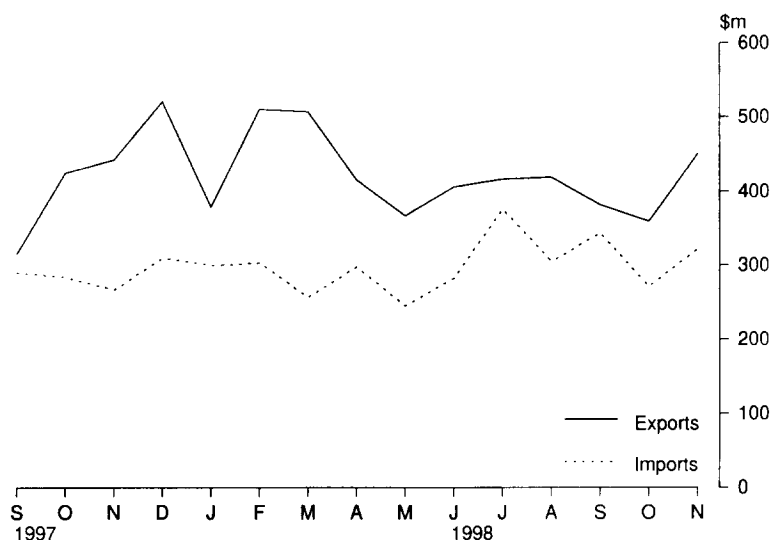
The value of merchandise exports, where the final stage of production was in South Australia, was \$450.5m in November 1997. This was 25.2% higher than October 1997 exports and 1.6% higher than exports in November 1996. The major commodity groups exported during the month were road vehicles, parts and accessories (\$84.1m) and metals and metal manufactures (\$61.7m). Wine exports decreased 46.5% in November 1997 to \$33.2m.

The major destinations of South Australian exports were the United States of America \$92.4m, an increase of \$66.2m from last month, and the ASEAN countries \$68.8m. The increase in exports to the United States of America was largely the result of an increase in road vehicle exports (up \$62.5m). Exports to the United Kingdom fell \$28.4m, contributing to the decline in exports to the European Community, down 36.5% to \$56.9m. Exports of wine to the United Kingdom fell from \$37.8m in October 1997 to \$15.5m in November 1997. Exports to the Asian countries of Japan, China and Hong Kong all rose, with exports to total East Asia also increasing, up 48.4% to \$221.2m.

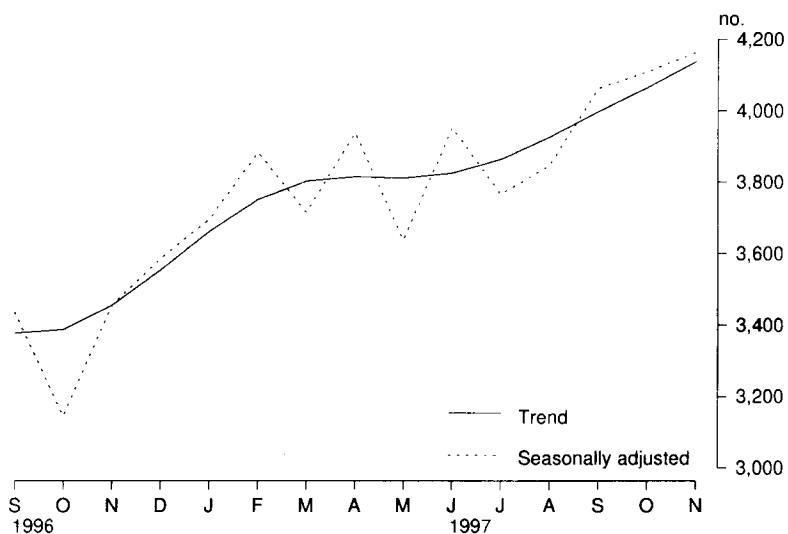
Merchandise imports

The value of merchandise imports released from Customs control in South Australia rose to \$321.8m in November 1997. This represents an 18.5% (\$50.1m) increase from October 1997 and a 20.3% increase from the same period last year. The increase in imports was largely the result of a \$65.1m increase in imports of petroleum and petroleum products, and a \$3.1m increase in the imports of chemicals. All other selected commodity groups experienced decreases in imports in November 1997 from October 1997. The two largest reductions occurred in road vehicles, parts and accessories, down \$12.6m to \$55.4m and other manufactured goods, falling to \$51.3m from \$56.7m.

Merchandise exports and imports



New motor vehicle registrations

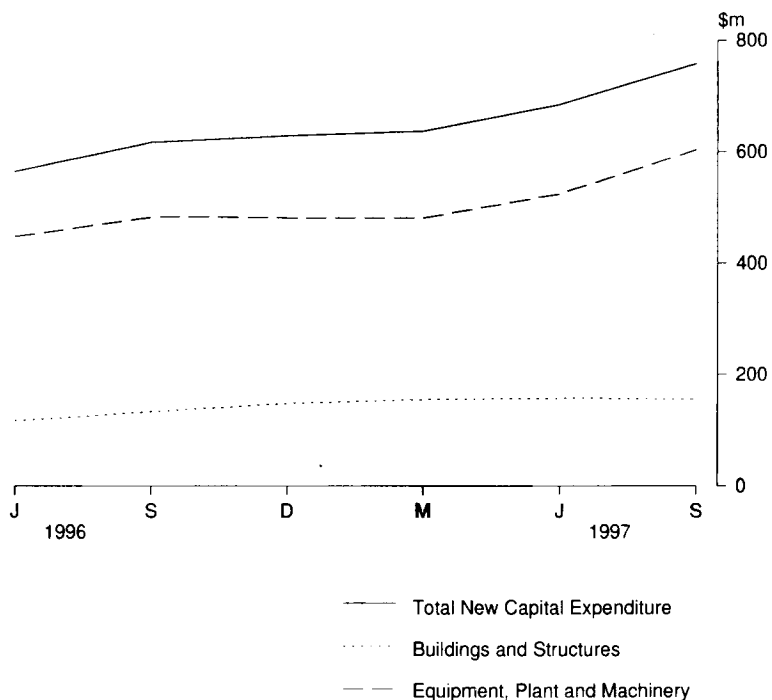


Private new capital expenditure

The trend estimate at current prices for private new capital expenditure for the September quarter 1997 increased 10.7%. Expenditure on buildings decreased by 2.5%, while expenditure on equipment rose by 14.8%. The Australian total decreased by 0.4% in the same period.

Private new capital expenditure in original terms for the September quarter 1997 was \$718m, an increase of 11.0% from the September quarter 1996. Buildings and structures accounted for \$159m, and equipment, plant and machinery \$559m.

Private new capital expenditure, type of asset: **Trend**



Tourist accommodation

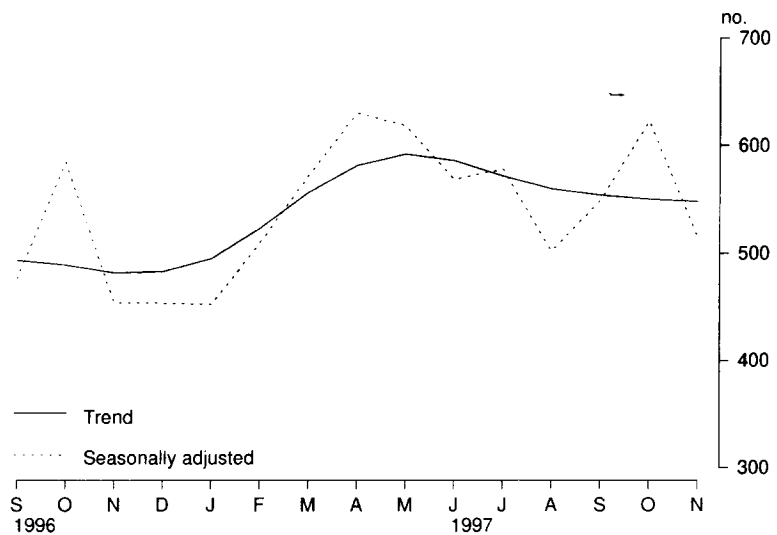
The number of rooms available in hotels, motels and guesthouses in South Australia for September quarter 1997 remained largely unchanged from September quarter 1996, rising by 6 to 10,885. The room occupancy rate increased to 52.2% (from 48.9%), compared with 58.0% for Australia. Takings in South Australia also increased, rising to \$41.7m, 3.4% and 11.1% higher than June quarter 1997 and September quarter 1996 respectively. Average takings per room night occupied was \$80.

PRODUCTION

Building approvals

The November 1997 trend estimate for total dwelling units approved decreased by 0.4%, following a fall in the seasonally adjusted estimate. The trend for the number of private sector houses approved has risen for the first time in six months but is still 7.5% below the May 1997 estimate. In original terms, the number of dwelling unit approvals for November 1997 fell 7.8% to 552.

Dwelling units approved



The national trend estimate for the total number of dwelling units approved for November 1997 was 12,813, up by 2.1% from the October 1997 estimate and 15.1% more than the previous years estimate. In original terms, South Australia accounted for 4.2% of the total dwelling units approved in Australia during November 1997.

The total value of building approved in November 1997 was \$126.7 of which \$64.5m was non-residential building. Of the total value of non-residential building approved, Offices accounted for \$39.8m (of which one private sector job contributed \$34.2m), followed by Shops with \$6.0m. The value of new residential building remained the same as the previous month at \$51.2m.

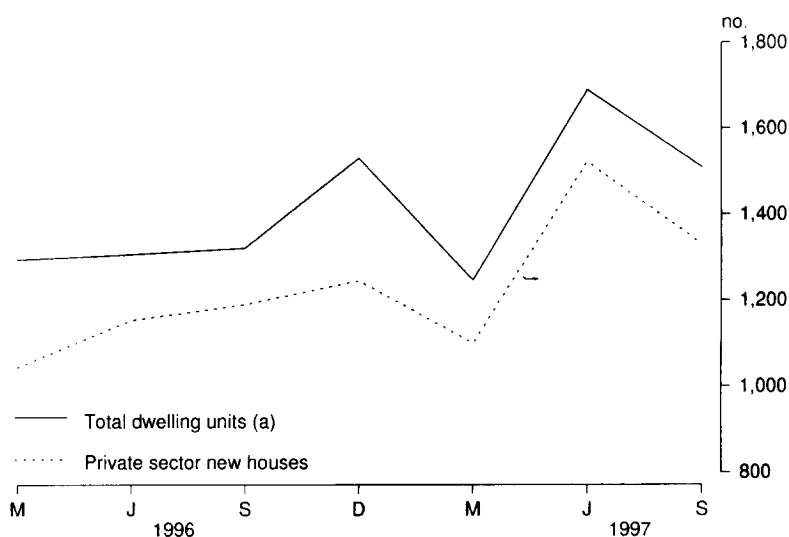


Building activity

For the September quarter 1997, the trend for the total number of dwelling units commenced in South Australia increased marginally and follows a rise of 4.1% in the June quarter 1997. In original terms, 1,509 dwelling units were commenced in the September quarter 1997, a decrease of 182 or 10.8% from the previous quarter.

During 1996-97 there were 5,790 dwelling units commenced, a decrease of 2.9% from the 1995-96 financial year figure. Both the number of new houses and new other residential building commenced decreased when compared to the previous financial year, falling 10.7% to 5,113 and 19.1% to 651 respectively.

Dwelling units commenced



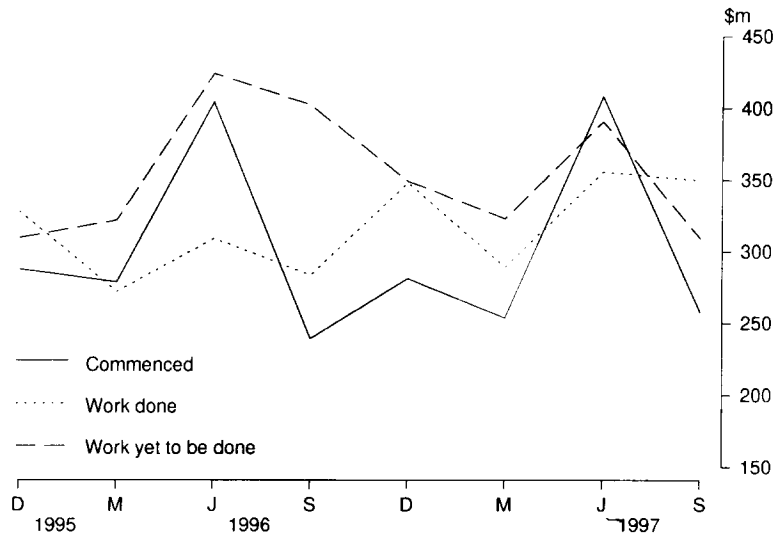
(a) Includes conversions

The total value of building work commenced during the September quarter 1997 fell by 36.9% to \$257.7m from the previous quarter's high of \$408.4m. This fall can be mostly attributed to a 57.7% fall in the non-residential building sector, in particular, in the Hotels etc., Shops, Health and Miscellaneous categories. The value of total building work commenced for 1996-97 continued to decline, falling 5.4% from the previous financial year to \$1,181.9m.

The total value of building work done during the September quarter 1997 fell by 1.7% to \$349.7m compared with a 5.5% increase nationally. Compared with the September quarter 1996, South Australia had a 23.5% increase in the value of total building work done which was comparable with the national movement of a 19.7% increase. For the 1996-97 financial year, \$1,275.9m of building work was done in South Australia, 5.7% more than the previous financial year.

The total value of building work yet to be done was \$309.1m at the end of September quarter 1997, a fall of 20.9% from the previous quarter while the corresponding national figure increased by 5.6% to \$11,246.1m. Expressed as a proportion of the national total, the total value of building work yet to be done in South Australia was 2.7% for the September quarter 1997.

Value of building activity



Engineering construction

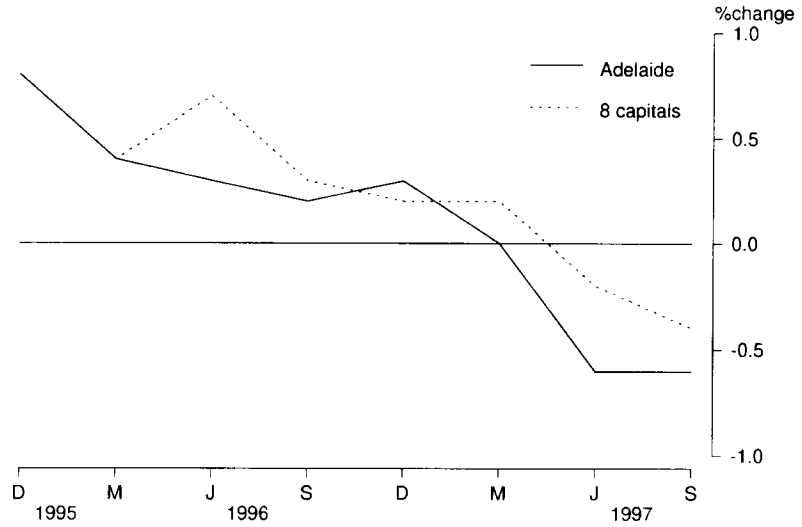
In South Australia, the value of engineering construction work done for the September quarter 1997 was down 16.9% to \$255.5m compared with a 12.0% fall nationally and had a 6.8% share of the national total of \$3,755.0m. The value of work commenced during the quarter for South Australia rose 32.1% to \$409.1m as did the corresponding national figure, increasing by 13.2% to \$5,003.1m. The State's proportion of national engineering and construction commencements was 8.2% for the September quarter 1997.

PRICES

Consumer Price Index

The Consumer Price Index (all groups) in Adelaide decreased by 0.6% between the June and September quarters 1997. This was the second consecutive quarterly decrease. Contributing most to the overall decrease for the September quarter were falls in the health and personal care, and housing groups. The annual movement in the Adelaide index was a decrease of 0.8%.

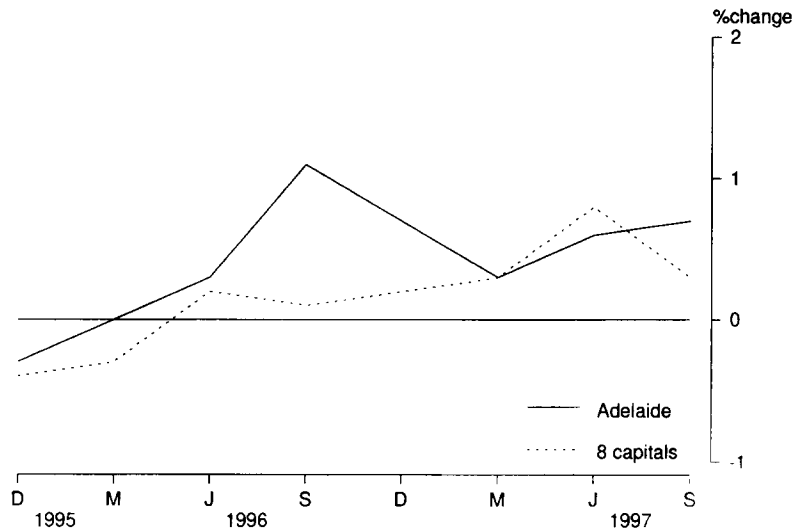
Consumer price index



House building materials index

The Price Index of Materials Used in House Building rose 0.7% in Adelaide for the September quarter 1997. The increase can be attributed to rises in softwood and electrical cable. The weighted average of the six State capitals rose 0.3%.

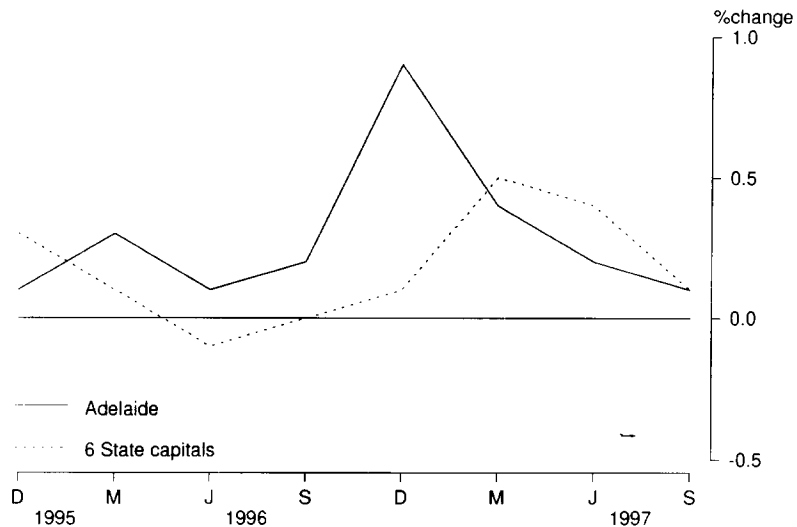
For the year to September quarter 1997 the index increased 2.3% in Adelaide with the weighted average of the six State capitals increasing 1.5% for the same period.



Non-house building materials index

A rise of 0.1% in the Price Index of Materials Used in Building Other than House Building was recorded for the September quarter 1997 in Adelaide. Softwood, non-ferrous pipes and electrical cable were the main contributors to the rise. The weighted average of the six State capitals also rose 0.1% for the quarter.

For the year to September quarter 1997 the index increased 1.5% in Adelaide with the weighted average of the six State capitals increasing 1.2% for the same period.



House prices indexes

During the September quarter 1997 the Price Index of Established Houses in Adelaide rose by 0.7% and the Project Home Index increased by 4.7%. The weighted average of the eight capital cities index, over the same period showed a 1.8% increase for established houses and 0.6% for project houses.

Over the year to the September quarter 1997 the Established House Price Index for Adelaide rose 1.9% whilst the Project Home Price Index increased by 0.5%. Nationally, the indexes showed 4.3% and 0.5% increases respectively.

Passenger transport cost index

The Passenger Transport Cost Index measures changes in the costs of operating a public transport passenger bus service in Adelaide. Costs covered include labour costs, leasing charges, registration and insurance, repairs and maintenance, fuel and overheads. The index has been compiled on a quarterly basis from September 1995 with a base of 100.0 in 1993-94. The September quarter 1997 index was 108.2, a 0.2% increase from the June quarter 1997. The index showed a 3.9% increase in the 12 months to September 1997.

LABOUR FORCE AND DEMOGRAPHY

Population

At 30 June 1997 the estimated resident population of South Australia was 1,479,806. This was an increase of 1,864 persons from the March quarter and was due to a natural increase of 2,023 persons partly offset by a net migration loss of 159 persons.

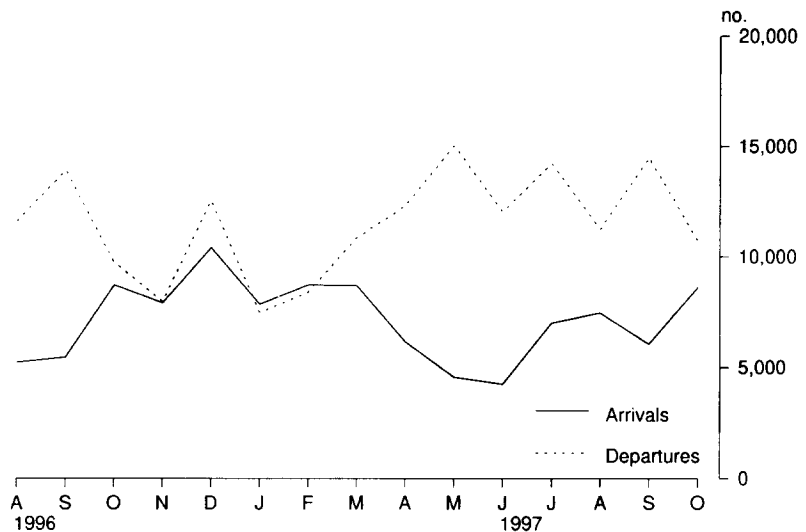
Short-term overseas visitor arrivals

In October 1997 South Australia had 8,629 short term overseas visitor arrivals. This has risen from 6,061 in September 1997 (42.4%), however a comparison with the same month last year reveals a fall of 1.4%. Australia experienced an increase in visitor arrivals when compared with both September 1997 and October 1996, up 10.7% and 4.6% respectively. South Australia's share of short term overseas visitor arrivals was 2.4%.

Short-term resident departures

There were 10,694 short term resident departures from South Australia in October 1997. This represents a fall of 26.2% from last month, however a comparison with October 1996 reveals an increase of 9.8%. Australia experienced similar results, with a 22.1% fall in departures from September 1997 while there was an increase of 10.6% from the same time last year. South Australia accounted for 4.5% of short-term resident departures.

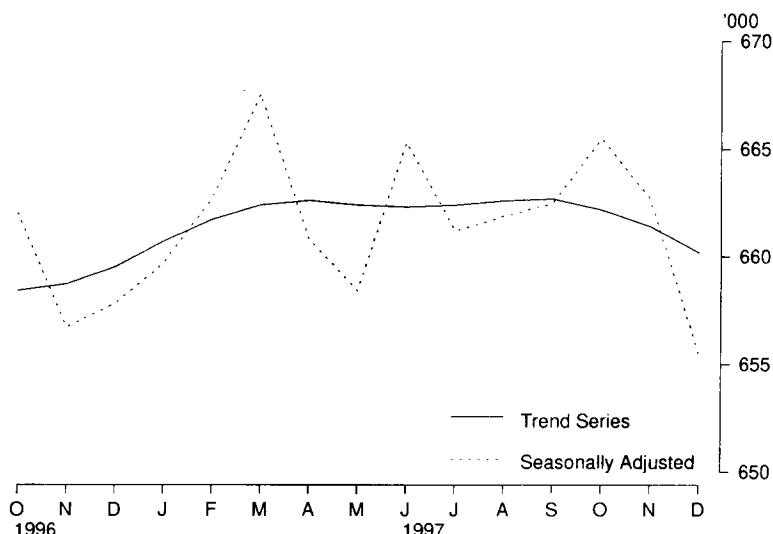
Short-term arrivals and departures



Employment

The trend estimate of employed persons was 660,200 in December 1997, similar to the level of 12 months ago (659,500).

**Employed persons**



Unemployment

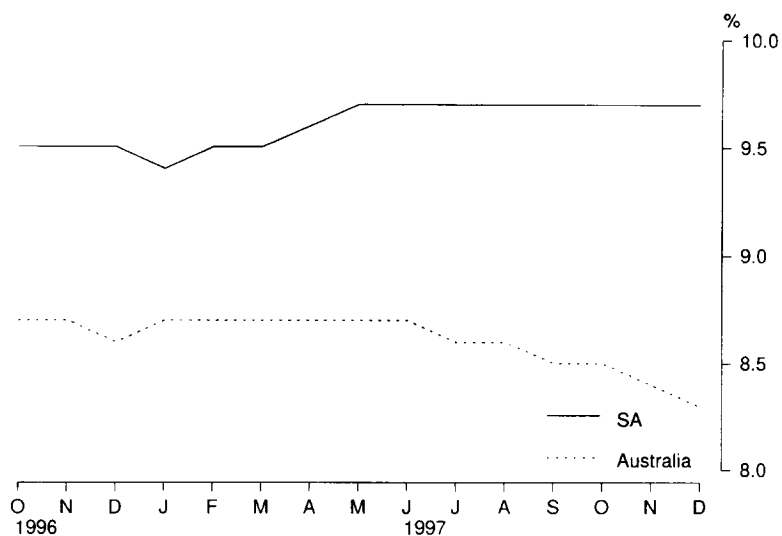
The trend unemployment rate for South Australia has remained at 9.7% for eight consecutive months. Current levels are higher than the 9.5% recorded in December 1996.

At December 1997, the median duration of unemployment (one half of all observations lie above this value, and the other half below) in South Australia was 31 weeks, higher than the 23 weeks recorded twelve months ago.

In original terms, the teenage full-time unemployment rate in South Australia was 35.0% in December 1997, up from the 28.8% recorded in November 1997. Recent levels are considerably lower than the April 1997 high of 42.7%.

The trend estimate of the unemployment rate for Australia has gradually decreased from 8.6% in December 1996 to 8.3% in December 1997.

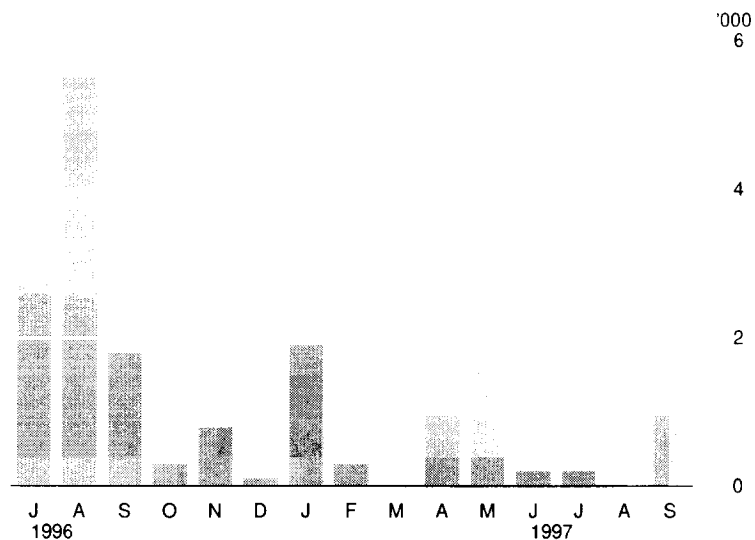
Unemployment rates: **Trend**



Industrial disputes

There were 1,200 working days lost through industrial disputes during September 1997. Although this was a large increase over the previous month when less than 50 days were lost, South Australia remained as one of the lowest States with disputes, reporting only 7,700 working days lost for the year ending September 1997. The Australian rate for the same period was 461,000 working days lost.

Working days lost



Overtime

In original terms, the proportion of employees who worked overtime in November 1997 was 15.0%. The same percentage was recorded in November 1996.

In November 1997, employees who worked overtime recorded an average of 6.5 overtime hours per week. This was slightly higher than the 6.4 overtime hours recorded 12 months earlier.

INCOMES

Average weekly earnings

The trend estimate of average weekly ordinary time earnings of full-time adult male employees in South Australia has increased by 1.4% from \$693.10 in May 1997 to \$703.00 in August 1997. For females, the corresponding increase was less pronounced at 0.3% from \$582.30 in May 1997 to \$584.10 in August 1997.

Between May 1997 and August 1997, the trend estimate of average weekly total earnings of all employees (including part-time workers) in South Australia rose by 1.6% to \$545.70. Over the same period, the national level increased by 0.6% to \$583.60.

Note: Since it is an average of earnings across all employees, changes in average weekly earnings may occur through changes in employment as well as changes in pay levels.

Award rates of pay

In the 12 months to June 1997, the weekly award rates of pay index for full-time employees in both South Australia and Australia increased by 1.4%.

Note: June was the last month of issue of this index. It will be replaced by a wage costs index, due for release in May 1998 and covering the December 1997 quarter. Non-wage costs, for example fringe benefits tax and payroll tax, will be added in consecutive stages to produce a composite labour costs index. This indicator should be available in early 1999.

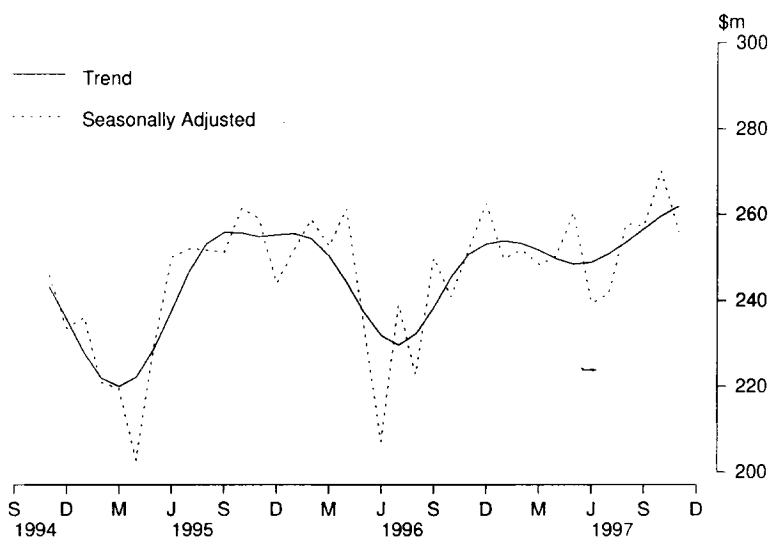


FINANCIAL MARKETS

Housing finance

The steady increase evident since May in the trend estimate for the value of secured housing finance commitments has continued, rising 0.8% during November to \$261.8m, 4.5% above the previous November. Seasonally adjusted, the value of commitments fell 5.3% to \$255.9m. In original terms the average borrowing size in November 1997 was \$85,300, up 7.1% from the average borrowing twelve months earlier. Nationally the average borrowing was \$114,600, up 11.5% compared with the previous November.

Secured housing finance commitments(a)



(a) Excludes alterations and additions. Includes refinancing.

Total housing finance commitments (original figures including alterations and additions) decreased 4.2% to \$267.1m in November 1997, 1.8% above the previous November. Nationally new lending commitments were down 6.7% for the month, 11.2% above November 1996. The number of dwellings financed, decreased 4.5% to 2,996.

Construction of dwellings decreased 9.1% to \$30.3m but continued to be significantly above the corresponding month of the previous year for the eighth consecutive month. Commitments for the purchase of established dwellings, the largest category, were down 2.3% to \$149.4m, 9.9% below the previous November. Commitments for newly erected dwellings were up 8.2% to \$9.2m.

Refinancing decreased 5.6% to \$66.7m, 47.8% above November 1996. Alterations and additions decreased 12.8% to \$11.5m and for the twelfth consecutive month were significantly below the corresponding month of the previous year.

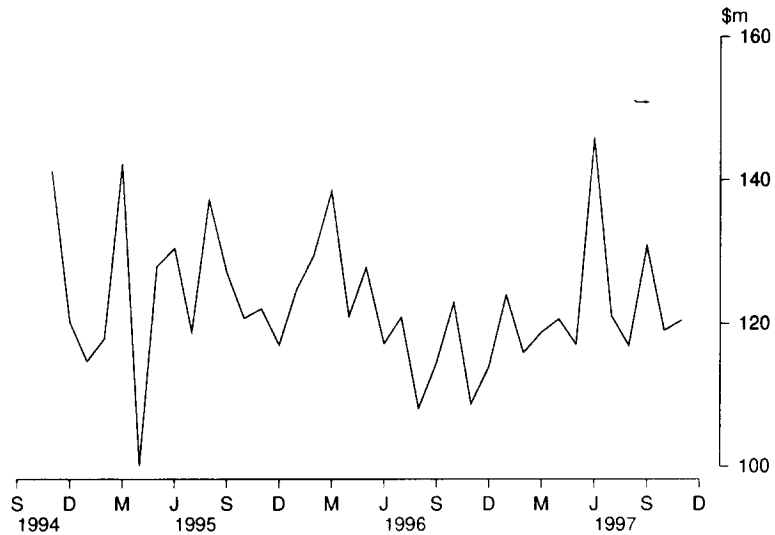
Personal finance

Total personal finance commitments increased marginally to \$221.5m in November 1997, 17.3% above November 1996. Nationally, total commitments decreased 4.0% to be 39.9% above the previous year. On a seasonally adjusted basis, total Australian commitments increased 7.3% in November 1997.

Fixed loan commitments increased 1.2% to \$120.5m, 10.7% above the previous November. The main increase was for debt consolidation which was up 12.6% to \$11.8 million. Boats, caravans and trailers increased 22.3% to \$3.5 million, the fourth consecutive monthly rise. The main fall was used motor cars and station wagons, the largest category, down 4.5% to \$35.8m. New motor cars and station wagons decreased 4.3% to \$14.8m.

Total secured revolving credit facilities were down marginally to \$101.0m, 26.3% above November 1996. The decrease in secured revolving credit facilities, down 13.3% to \$47.7m, offset the increase in unsecured, up 13.4% to \$53.2m.

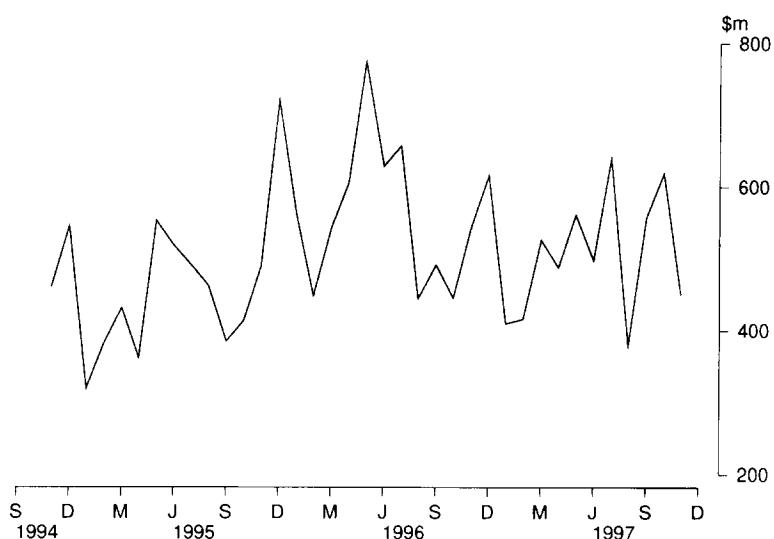
Fixed loan commitments, all lenders



Commercial finance

Total commercial finance commitments decreased 27.3% to \$450.3m in November 1997, 16.9% below the previous November. Nationally commercial finance commitments decreased 7.1% for the month, but were 23.6% higher than the previous November. Revolving credit facilities decreased 48.1% to \$119.9m, 26.9% lower than November 1996. All categories decreased with the main falls recorded for manufacturing (down \$29.0m to \$40.6m), property and business services (down \$28.6m to \$9.4m), agriculture, forestry, fishing and hunting (down \$16.3m to \$23.8m). All three categories had very big increases over the previous two months.

Commercial finance commitments, all lenders



Commitments under fixed loan facilities decreased 14.9% to \$330.4m, 12.5% lower than the previous November. The main category to decrease was property and business services, down \$22.4m from a record \$92.4m. Agriculture, forestry, fishing and hunting fell \$18.8m to \$35.6m, after the big increase in the previous month. The only categories to increase during November were manufacturing (up \$4.5m to \$20.6m) and other industries (up \$15.8m to \$84.0m).

Lease finance

New finance lease commitments fell for the fifth consecutive month, with a 17.7% drop to \$17.8m in November 1997, marginally below the previous November. The national total decreased 6.0%, to be 24.5% higher than November 1996. Most of the decrease was due to the drop back in finance for new heavy trucks from \$4.1m to \$0.4m, following the highest month since November 1989. Construction and earth moving equipment was the other main category to fall, down \$0.9m to \$1.2m.

The main increase was electronic data processing equipment, up 50.7% to \$1.8m. The two largest categories, new and used motor cars and station wagons not subject to depreciation increased, new by 3.0% to \$4.8m and used by 9.4% to \$2.5m.

FORWARD OUTLOOK

Composite leading indicator for Australia

The Composite Leading Indicator (CLI) is a single time series produced by aggregating eight individual economic indicators, and has been developed by the ABS as an experimental series to supplement existing forms of economic analysis and modelling.

The CLI summarises the early signals contained in a selection of economic indicators and is designed to assist the detection of turning points between successive expansions and slow downs of economic activity as measured by constant price GDP(A). It does not attempt to forecast the level of economic activity.

Composite leading indicator for Australia *continued*

In the September quarter 1997 :

- the experimental CLI rose 0.03%, following rises of 0.17% and 0.13% in the March quarter 1997 and June quarter respectively.
- Of the eight components used in its compilation, four made positive contributions and three made negative contributions to the change in the September quarter 1997. The largest positive contribution continued to come from the All Industrials index component, while the largest negative contribution was from the trade factor.

The quarterly data are released in more detail in the *Australian Economic Indicators* (Cat. no. 1350.0). The CLI was the topic of the Focus article in the September 1993 edition of *South Australian Economic Indicators* (Cat. no. 1307.4). A review of the performance of the CLI and its components was published in the July 1997 issue of Cat. no. 1350.0.

Australian business expectations

Surveys of business expectations have been available to decision makers for a number of years from several sources. These surveys provided *qualitative* indicators in the form of the net proportion of businesses expecting a rise or fall in future business conditions. Since the December quarter 1993, the ABS has been compiling a *quantitative* indicator of business expectations in the form of an expected weighted aggregate change in a range of economic variables. These data are available on a quarterly basis in *Australian Business Expectations* (Cat. no. 5250.0).

Sales of goods and services, South Australia and Australia

Reference period	SHORT TERM EXPECTED AGGREGATE CHANGE BETWEEN.....		MEDIUM TERM EXPECTED AGGREGATE CHANGE BETWEEN.....	
	Sep 1997 and Dec 1997	Dec 1997 and Mar 1998	Sep 1997 and Sep 1998	Dec 1997 and Dec 1998
	%	%	%	%
South Australia	5.1	0.2	4.8	4.3
Australia	3.0	-0.3	3.9	2.9

*Short term*—South Australian businesses expect an increase of 0.2% in the sales of goods and services in the March quarter 1998 compared with the December quarter 1997. All other States (except the Northern Territory) expect a fall in the sales of goods and services, with Australia expecting a 0.3% decline.

*Medium term*—Businesses in South Australia expect sales of goods and services in the December quarter 1998 to be 4.3% above December quarter 1997, the highest of all States and Territories. The largest expected increases for South Australia were in Mining (15.7%) and Finance and Insurance (5.8%). The expectation for Australian sales of goods and services was a growth of 2.9%.

## FOCUS — Changes Coming for the Consumer Price Index

---

### INTRODUCTION

In order to ensure the Consumer Price Index (CPI) continues to meet community needs, the Australian Bureau of Statistics (ABS) has regularly reviewed it since it was first compiled in 1960. These reviews update item weights and provides the opportunity to reassess the scope and coverage of the index and other methodological issues.

Decisions about changing any aspect of the CPI are generally extremely important and often most difficult to make. The decisions which have been taken represent an on-balance view of the CPI and how it is best suited to meet the varying requirements of the broader Australian community now and into the next century.

Historically, the CPI was designed as a measure of changing living costs of wage and salary earner households. The CPI was a key input into centralised wage setting processes.

Consultation has shown that the CPI is now increasingly seen as a measure of price change for the household sector as a whole.

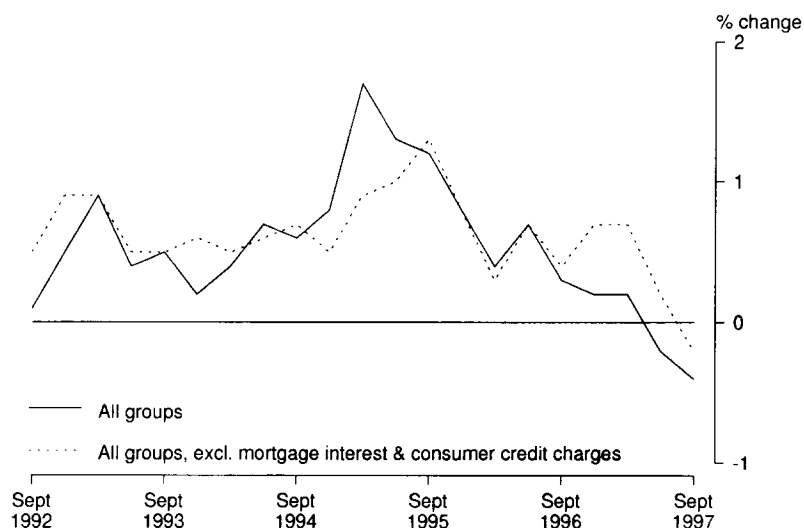
A further information paper will be released in September 1998, prior to the release of the September quarter 1998 CPI, which will provide details of the final composition of the 13th series CPI.

### KEY CHANGES TO THE 13TH SERIES AUSTRALIAN CPI

The 13th series CPI will be specifically designed to provide a general measure of price inflation for the household sector as a whole. Accordingly, the ABS will adopt the acquisitions approach for the construction of the index (see the note 'Conceptual approaches to the construction of consumer price indexes' at the end of this article) and utilise a weighting pattern representative of all private households in the eight capital cities. The most noticeable changes from the current CPI will be the exclusion of mortgage interest and consumer credit charges from the index and the inclusion of net expenditure on new dwellings (excluding land).

The graph below shows the current All groups CPI (the so called 'headline' CPI) and the CPI excluding mortgage interest and consumer credit charges.

#### Consumer Price Index



The population coverage of the CPI will be expanded from the current restriction of wage and salary earner households to cover all private households in the eight capital cities. This will result in the population coverage increasing from 29% to 64% of Australian private households.

The CPI will continue to be compiled and published quarterly.

A ninth major commodity group, Financial services, will be incorporated into the index, comprising specific fees and charges paid in respect of financial services together with the cost of financial intermediation services.

Home computers and software, tertiary education fees and domestic services will be added to the index, but gambling will continue to be excluded.

The selected State and local government charges index and the index of imported items will be dropped. Both indexes will be replaced by more appropriate indexes to be developed in consultation with users. State and local government charges and imported items will continue to be included in the CPI.

In light of the decision to change the design of the CPI to provide a better measure of price inflation for the household sector as a whole, the ABS will review the allocation of the CPI price sample across the capital cities with a view to optimising the national estimate. This work will be undertaken as resources permit and will involve further consultation with key stakeholders.

The ABS will proceed to develop a measure of underlying inflation for the household sector in accordance with the proposals contained in *Information Paper: An Analytical Framework for Price Indexes in Australia* (Cat. no. 6421.0). The most significant characteristic of this measure is that it will net out the effects of changes in indirect taxes.

The ABS will also develop analytical indexes specifically designed to measure changes in the cost of living of subgroups in the population. These indexes will be constructed on an outlays basis and will be published at approximately annual intervals.

The ABS will introduce the facility to compile spatial comparisons of price levels in the eight capital cities as resources permit.

The 13th series CPI will be introduced in the September quarter 1998 and will be linked to the 12th series CPI at the June quarter 1998.

**ENDNOTE: CONCEPTUAL APPROACHES TO THE CONSTRUCTION OF CONSUMER PRICE INDEXES**

The Fourteenth International Conference of Labour Statisticians, convened by the Governing Body of the International Labour Organisation (ILO) in 1987, adopted a Resolution concerning consumer price indexes (ILO resolution) which includes the following statement:

'The purpose of a consumer price index is to measure changes over time in the general level of prices of goods and services that a reference population acquire, use or pay for consumption.'

The phrase 'goods and services that a reference population acquire, use or pay for consumption' (emphasis added) recognises that there are essentially three conceptually valid approaches to CPI compilation:

- the acquisitions approach, which defines the CPI 'basket' as consisting of all those consumer goods and services actually acquired by households during the base period;
- the cost of use approach, which defines the CPI 'basket' as consisting of all those consumer goods and services actually consumed (or used up) in the base period irrespective of when they were acquired or paid for; and
- the actual outlays (or payments) approach which defines the CPI 'basket' in terms of the actual amounts paid (or outlaid) by households during the base period to gain access to consumer goods and services (without regard to the source of the funds).

There is no international standard approach which is recommended for adoption by countries. Therefore countries have adopted different approaches which they believe best suit their principal uses.

The acquisition and outlays approaches result in very similar baskets. In fact the acquisitions basket can be viewed as a subset of the outlays basket. Both approaches include all those goods and services acquired during the base period, while the outlays approach also includes payments which are not directly related to the acquisition of specific goods and services but represent inescapable costs of acquisition or consumption. Examples are local government property rates and interest charges. Interest charges are incurred by those households that have financed purchases by borrowings. The total amount of interest charges incurred in any period typically bears no direct relationship to the actual quantities of specific goods and services acquired by households during the period. As such interest charges are not included in an acquisitions index.

**FURTHER INFORMATION**

For further information refer to *Information Paper: Outcome of the 13th Series Australian Consumer Price Index* (Cat. no. 6453.0), available from ABS Bookshops and the ABS internet site <http://www.abs.gov.au> or contact the Director of the Prices Development Section, Keith Woolford, telephone (02) 6252 6673.





# LIST OF TABLES



TABLES	Page
1	Statistical summary ..... 26
	Time series
2	State accounts—current prices ..... 28
3	State accounts—average 1989–90 prices ..... 29
4	Merchandise exports by selected commodity group ..... 30
5	Merchandise exports by selected countries ..... 31
6	Merchandise exports by industry of origin ..... 32
7	Merchandise imports by selected commodity group ..... 33
8	Turnover of retail establishments by industry ..... 34
9	New motor vehicle registrations by type of vehicle ..... 35
10	Actual private new capital expenditure by selected industry and type of asset ..... 36
11	Tourist accommodation ..... 37
12	Building approvals ..... 38
13	Building commencements ..... 39
14	Value of building work done during period ..... 40
15	Production, livestock products and selected commodities ..... 41
16	Consumer price index, by group—Adelaide ..... 42
17	Average retail prices of selected consumer items—Adelaide ..... 43
18	Estimated resident population and components of population change .... 44
19	Civilian labour force status ..... 45
20	Civilian labour force, unemployment and participation rates ..... 46
21	Average weekly earnings of employees ..... 47
22	Finance commitments ..... 48



## 1

## STATISTICAL SUMMARY

Indicator	Unit	Period	SOUTH AUSTRALIA.....			AUSTRALIA.....				
			Number	% change from ...		Number	% change from .....		SA as a % of Aust.	Source index
				Previous period	Same period previous year		Previous period	Same period previous year		
<b>State accounts</b>										
Domestic final demand										
Current prices trend	\$m	Sep qtr 97	9 370	2.4	6.1	130 607	1.6	5.2	7.2	(1)
1989-90 prices trend	\$m	Sep qtr 97	8 058	2.0	5.1	114 301	1.3	5.2	7.0	(1)
Private final consumption expenditure										
Current prices trend	\$m	Sep qtr 97	6 026	2.2	5.2	81 153	1.4	4.8	7.4	(1)
1989-90 prices trend	\$m	Sep qtr 97	5 095	1.9	3.9	68 509	1.1	3.3	7.4	(1)
Private gross fixed capital expenditure										
Current prices trend	\$m	Sep qtr 97	1 338	7.2	11.0	22 301	3.6	7.7	6.0	(1)
1989-90 prices trend	\$m	Sep qtr 97	1 273	6.3	10.4	22 449	4.2	13.9	5.7	(1)
Wages, salaries and supplements										
Current prices trend	\$m	Sep qtr 97	4 558	0.6	2.5	65 546	0.8	4.2	7.0	(1)
<b>International accounts</b>										
Exports	\$m	Nov 97	450.5	25.2	1.6	7 332.9	1.2	20.6	6.1	(2)
Imports	\$m	Nov 97	321.8	18.5	20.3	7 193.7	-8.8	9.4	4.5	(2)
<b>Consumption and investment</b>										
Retail turnover										
Current prices original	\$m	Nov 97	856.9	2.0	5.5	11 505.2	0.6	4.0	7.4	(3)
Current prices trend	\$m	Nov 97	824.5	0.4	5.3	11 241.5	0.3	5.4	7.3	(3)
1989-90 prices original	\$m	Sep qtr 97	1 961.3	2.7	2.6	26 988.6	3.0	3.8	7.3	(3)
New motor vehicle registrations										
Original	no.	Nov 97	4 197	-3.2	19.4	61 460	-7.8	14.6	6.8	(4)
Trend	no.	Nov 97	4 139	1.8	19.8	63 707	1.4	17.9	6.5	(4)
Private new capital expenditure										
Current prices original	\$m	Sep qtr 97	718	-0.7	11.0	10 601	-10.9	3.1	6.8	(5)
Current prices trend	\$m	Sep qtr 97	758	10.7	22.7	11 132	-0.4	1.8	6.8	(5)
Private new capital expenditure	\$m	1996-97	2 580	..	37.7	43 837	..	8.3	5.9	(5)
Takings, licensed hotels, motels and guesthouses with facilities	\$m	Sept qtr 97	41.7	3.4	11.1	949.7	11.3	5.9	4.4	(6)
<b>Production</b>										
Dwelling unit approvals										
Original	no.	Nov 97	552	-7.8	13.1	13 077	3.0	15.5	4.2	(7)
Trend	no.	Nov 97	548	-0.4	13.7	12 813	2.1	15.1	4.3	(7)
New dwelling units commenced	no.	Sep qtr 97	1 509	-10.8	14.2	34 335	0.0	13.3	4.4	(8a)
Value of non-residential building approvals	\$m	Nov 97	64.5	89.1	62.5	992.1	-19.8	-41.5	6.5	(7)
Value of total building activity										
Commenced	\$m	Sep qtr 97	257.7	-36.9	7.8	7 819.1	6.2	20.0	3.3	(8)
Work done	\$m	Sep qtr 97	349.7	-1.7	23.5	7 648.0	5.5	9.5	4.6	(8)
Work yet to be done	\$m	Sep qtr 97	309.1	-20.9	-23.0	11 246.1	5.6	19.7	2.7	(8)
Value of engineering construction work done	\$m	Sep qtr 97	255.5	-16.9	69.0	3 755.0	-12.0	-1.1	6.8	(9)
Manufacturing production										
Red meat	tonnes	Nov 97	20 258	2.3	-7.6	243 319	-6.8	4.6	8.3	(11)
Mineral exploration expenditure (other than for petroleum)	\$m	Sept qtr 97	12.5	-13.8	131.5	301.8	-13.1	10.1	4.1	(12)

Indicator	Unit	Period	SOUTH AUSTRALIA.....			AUSTRALIA.....			SA as a % of Aust.	Source index
			Number	% change from....		Number	% change from....			
				Previous period	Same period previous year		Previous period	Same period previous year		
<b>Prices</b>										
CPI - All groups	1989-90=100	Sep qtr 97	121.2	-0.6	-0.8	119.7	-0.4	-0.3	..	(13)
Price index of materials used in house building	1989-90=100	Sep qtr 97	122.4	0.7	2.3	117.3	0.3	1.5	..	(14)
Price index of materials used in building other than houses	1989-90=100	Sep qtr 97	114.8	0.1	1.5	114.0	0.1	1.2	..	(15)
Price index of established houses	1989-90=100	Sep qtr 97	109.8	0.7	1.9	118.9	1.8	4.3	..	(16)
Price index of project homes	1989-90=100	Sep qtr 97	111.9	4.7	0.5	109.9	0.6	0.5	..	(16)
<b>Labour force and demography</b>										
Population (resident at end qtr)	'000	Jun qtr 97	1 479.8	0.1	0.4	18 532.2	0.2	1.2	8.0	(17)
Short-term overseas visitors arrivals	no.	Oct 97	8 629	42.4	-1.4	366 477	10.7	4.6	2.4	(21)
Short-term resident departures	no.	Oct 97	10 694	-26.2	9.8	236 853	-22.1	10.6	4.5	(21)
<b>Labour force</b>										
Original	'000	Dec 97	735.5	0.4	1.0	9 378.9	1.3	0.8	7.8	(18)
Trend	'000	Dec 97	731.4	-0.2	0.4	9 276.3	0.2	0.9	7.9	(18)
<b>Employed persons</b>										
Original	'000	Dec 97	664.4	0.1	-0.3	8 615.2	1.1	1.4	7.7	(18)
Trend	'000	Dec 97	660.2	-0.2	0.1	8 509.2	0.2	1.3	7.8	(18)
<b>Participation rate</b>										
Original(a)	%	Dec 97	61.9	0.2	-0.6	63.9	0.7	-0.4	..	(18)
Trend(a)	%	Dec 97	61.5	-0.2	-0.2	63.2	0.0	-0.4	..	(18)
<b>Unemployment rate</b>										
Original(a)	%	Dec 97	9.7	0.2	0.1	8.1	0.1	-0.6	..	(18)
Trend(a)	%	Dec 97	9.7	0.0	0.2	8.3	0.0	-0.3	..	(18)
Job vacancies	'000	Nov 97	3.1	-35.4	19.2	68.1	-1.7	9.3	4.6	(19)
Average weekly overtime per employee working overtime	hours	Nov 97	6.5	8.1	1.4	7.0	6.9	-2.0	..	(19)
Industrial disputes	'000 working days lost	Sep 97	1.2	..	-33.3	51.9	59.7	46.6	2.3	(20)
<b>Incomes</b>										
<b>Average weekly earnings (full-time adults; ordinary time)</b>										
Original	\$	Aug 97	663.40	1.2	4.9	706.60	1.4	4.4	..	(22)
Trend	\$	Aug 97	663.40	1.1	4.4	706.00	1.1	4.0	..	(22)
Award rates of pay index (full-time adults, weekly)	Jun 1985=100	June 97	151.8	0.4	1.4	149.2	0.2	1.4	..	(23)
<b>Financial markets</b>										
Secured housing finance	\$m	Nov 97	267.1	-4.2	1.8	4 683.8	-6.7	11.2	5.7	(24)
<b>Finance commitments</b>										
Personal	\$m	Nov 97	221.5	0.2	17.3	3 671.3	-4.0	39.9	6.0	(25)
Commercial	\$m	Nov 97	450.3	-27.3	-16.9	14 696.6	-7.1	23.6	3.1	(25)
Lease	\$m	Nov 97	17.8	-17.7	-0.3	660.6	-6.0	24.5	2.7	(25)
<b>Interest rates</b>										
Banks new housing loans(a)	%	Dec 97	..	..	..	6.70	0.0	-1.6	..	(26)
<b>Banks business loans(a)</b>										
Small, medium sized business	%	Dec 97	..	..	..	8.75	0.0	-1.5	..	(26)
Large business	%	Dec 97	..	..	..	8.45	0.0	-1.1	..	(26)

(a) Change is shown in terms of percentage points.

Period	FINAL CONSUMPTION EXPENDITURE....		GROSS FIXED CAPITAL EXPENDITURE....		State final demand	Gross State product (I)	Wages, salaries and supplements
	Private	Government	Private	Government			
ANNUAL (\$m)							
1991-92	18 958	5 812	4 021	1 429	30 220	28 719	14 718
1992-93	19 493	5 969	3 980	1 372	30 814	29 989	15 131
1993-94	20 390	6 656	4 020	1 149	32 216	32 057	16 372
1994-95	21 562	6 698	4 913	1 232	34 404	33 437	16 720
1995-96	22 767	6 734	4 321	1 073	34 896	35 457	17 437
1996-97	23 081	6 858	4 713	1 175	35 827	36 023	17 938
PERCENTAGE CHANGE FROM PREVIOUS YEAR							
1991-92	4.6	6.1	-5.0	-6.5	2.9	1.0	-0.2
1992-93	2.8	2.7	-1.0	-4.0	2.0	4.4	2.8
1993-94	4.6	11.5	1.0	-16.3	4.5	6.9	8.2
1994-95	5.7	0.6	22.2	7.2	6.8	4.3	2.1
1995-96	5.6	0.5	-12.0	-12.9	1.4	6.0	4.3
1996-97	1.4	1.8	9.1	9.5	2.7	1.6	2.9
QUARTERLY, ORIGINAL (\$m)							
<b>1995-96</b>							
June	5 661	1 716	1 116	366.0	8 859	8 724	4 432
<b>1996-97</b>							
September	5 708	1 694	1 139	226.0	8 767	8 534	4 418
December	6 058	1 725	1 242	271.0	9 296	9 849	4 609
March	5 540	1 592	1 006	332.0	8 470	8 634	4 385
June	5 776	1 847	1 326	346.0	9 295	9 006	4 526
<b>1997-98</b>							
September	6 097	1 751	1 297	242.0	9 388	n.a.	4 588
QUARTERLY, TREND (\$m)							
<b>1995-96</b>							
June	5 707	1 678	1 112	276	8 774	8 894	4 398
<b>1996-97</b>							
September	5 729	1 681	1 124	295	8 829	8 909	4 447
December	5 746	1 700	1 138	309	8 893	8 976	4 495
March	5 792	1 718	1 170	304	8 984	9 049	4 513
June	5 894	1 726	1 248	284	9 152	9 116	4 531
<b>1997-98</b>							
September	6 026	1 736	1 338	270	9 370	n.a.	4 558
PERCENTAGE CHANGE FROM PREVIOUS QUARTER, TREND							
<b>1995-96</b>							
June	0.2	-0.5	2.8	0.0	0.4	-0.2	0.5
<b>1996-97</b>							
September	0.4	0.2	1.1	6.9	0.6	0.2	1.1
December	0.3	1.1	1.2	4.7	0.7	0.8	1.1
March	0.8	1.1	2.8	-1.6	1.0	0.8	0.4
June	1.8	0.5	6.7	-6.6	1.9	0.7	0.4
<b>1997-98</b>							
September	2.2	0.6	7.2	-4.9	2.4	..	0.6

Period	FINAL CONSUMPTION EXPENDITURE....		GROSS FIXED CAPITAL EXPENDITURE....		State final demand	Gross State product (I)
	Private	Government	Private	Government		
ANNUAL (\$m)						
1991-92	17 447	5 328	3 849	1 364	27 988	27 023
1992-93	17 491	5 358	3 696	1 292	27 837	28 077
1993-94	18 045	5 668	3 653	1 082	28 448	29 004
1994-95	18 901	5 778	4 396	1 147	30 222	29 226
1995-96	19 606	5 698	3 903	1 006	30 213	30 465
1996-97	19 672	5 735	4 560	1 092	31 059	30 868
PERCENTAGE CHANGE FROM PREVIOUS YEAR						
1991-92	1.6	2.3	-6.0	-7.8	1.4	-2.4
1992-93	0.3	0.6	-4.0	-5.3	-0.5	3.9
1993-94	3.2	5.8	-1.2	-16.3	2.2	3.3
1994-95	4.7	1.9	20.3	6.0	6.2	0.8
1995-96	3.7	-1.4	-11.2	-12.3	0.0	4.2
1996-97	0.3	0.6	16.8	8.5	2.8	1.3
QUARTERLY, ORIGINAL (\$m)						
<b>1995-96</b>						
June	4 866	1 432	1 026	340	7 664	7 437
<b>1996-97</b>						
September	4 888	1 428	1 108	211	7 635	7 363
December	5 165	1 433	1 221	252	8 071	8 701
March	4 702	1 336	969	306	7 313	7 280
June	4 917	1 538	1 262	323	8 040	7 524
<b>1997-98</b>						
September	5 153	1 444	1 245	214	8 056	n.a.
QUARTERLY, TREND (\$m)						
<b>1995-96</b>						
June	4 900	1 405	1 040	257	7 602	7 679
<b>1996-97</b>						
September	4 904	1 408	1 084	274	7 670	7 706
December	4 900	1 425	1 108	288	7 721	7 717
March	4 926	1 438	1 133	282	7 779	7 701
June	5 002	1 440	1 197	261	7 900	7 662
<b>1997-98</b>						
September	5 095	1 446	1 273	244	8 058	n.a.
PERCENTAGE CHANGE FROM PREVIOUS QUARTER, TREND						
<b>1995-96</b>						
June	0.1	-0.8	6.3	-1.2	0.7	0.2
<b>1996-97</b>						
September	0.1	0.2	4.2	6.6	0.9	0.4
December	-0.1	1.2	2.2	5.1	0.7	0.1
March	0.5	0.9	2.3	-2.1	0.8	-0.2
June	1.5	0.1	5.6	-7.4	1.6	-0.5
<b>1997-98</b>						
September	1.9	0.4	6.3	-6.5	2.0	..

## 4

## MERCHANDISE EXPORTS, By Selected Commodity Group(a)

<i>Period</i>	<i>Meat and meat preparations</i>	<i>Cereals and cereal preparations</i>	<i>Wine</i>	<i>Wool and sheepskins</i>	<i>Machinery</i>	<i>Metals and metal manu- factures</i>	<i>Fish and crustaceans</i>	<i>Road vehicles, parts and accessories</i>	<i>Petroleum and petroleum products</i>	<i>Total</i>
	\$'000	\$'000	\$'000	\$'000	\$'000	\$'000	\$'000	\$'000	\$'000	\$'000
ANNUAL										
1991-92	270 237	565 582	165 914	351 096	176 536	489 030	147 532	137 091	341 477	3 431 139
1992-93	282 181	573 375	192 255	318 989	211 426	490 594	154 608	338 359	372 445	3 760 602
1993-94	324 796	436 517	238 366	290 963	223 760	462 355	186 861	351 229	276 473	3 889 783
1994-95	307 785	261 052	250 527	301 645	285 309	571 094	191 386	332 321	285 310	3 829 336
1995-96	244 508	713 092	318 534	240 148	340 205	610 899	196 629	249 237	220 915	4 498 532
<b>1996-97</b>	182 478	745 241	397 949	260 974	378 918	542 204	191 072	655 895	286 458	5 013 272
MONTHLY										
<b>1996-97</b>										
September	10 417	43 137	38 598	16 764	31 955	35 423	10 554	36 844	6 262	315 960
October	14 922	44 586	40 663	22 285	26 217	46 325	16 063	75 999	20 187	425 409
November	18 388	23 261	25 814	22 961	32 122	46 400	16 170	99 763	41 799	443 477
December	21 065	85 128	34 865	30 635	45 346	60 849	16 009	70 076	17 719	521 428
January	13 701	108 010	21 366	18 392	17 653	33 405	20 477	46 808	4 275	379 289
February	17 065	124 924	30 844	22 350	27 097	39 512	20 942	58 234	46 498	511 223
March	17 492	118 000	34 185	22 682	39 619	46 802	23 664	58 579	25 712	507 198
April	17 415	61 511	34 047	25 234	31 992	39 508	19 935	45 176	26 197	416 299
May	16 003	16 145	36 804	26 233	35 382	55 444	15 449	39 711	15 488	367 826
June	15 421	18 998	30 160	23 847	29 641	47 560	11 051	57 089	36 706	406 373
<b>1997-98</b>										
July	12 693	18 848	38 625	31 249	41 558	47 372	16 678	53 331	14 509	417 206
August	11 641	18 718	44 669	17 560	31 082	43 635	18 804	60 483	39 320	419 398
September	15 521	27 719	62 569	23 338	38 659	50 905	18 769	18 938	26 927	382 068
October	17 430	10 488	62 172	23 026	26 454	37 875	23 608	39 337	10 935	359 878
November	20 005	8 739	33 242	28 659	40 975	61 684	17 927	84 089	17 368	450 548

(a) Final stage of production in South Australia.

## 5

## MERCHANDISE EXPORTS, By Selected Countries(a)

EUROPEAN  
COMMUNITY.....

## EAST ASIA.....

Period	United States of America	Middle East	United Kingdom	Total European Community	New Zealand	Japan	China	Hong Kong	ASEAN	Total East Asia
	\$'000	\$'000	\$'000	\$'000	\$'000	\$'000	\$'000	\$'000	\$'000	\$'000
ANNUAL										
1991-92	300 139	381 761	220 048	550 258	214 522	647 674	148 308	108 583	437 670	1 627 108
1992-93	352 764	314 049	237 520	594 701	288 421	649 684	208 135	171 803	487 174	1 820 065
1993-94	393 611	280 499	263 092	571 047	311 999	625 481	220 211	165 163	533 977	1 898 975
1994-95	329 878	184 342	246 118	553 051	376 262	682 937	177 875	193 014	551 433	2 004 013
1995-96	279 555	525 348	287 727	691 996	376 628	672 885	293 360	202 307	572 529	2 057 945
1996-97	707 871	563 409	304 647	641 143	38 210	612 115	244 917	234 546	615 018	2 034 487
MONTHLY										
<b>1996-97</b>										
September	45 339	32 344	25 007	41 103	26 836	36 244	13 183	18 520	37 428	128 271
October	74 338	30 300	28 488	58 604	40 477	67 681	20 077	12 600	45 513	173 485
November	100 612	23 047	32 472	56 564	33 279	57 312	17 778	27 444	64 655	189 397
December	71 258	81 329	28 905	65 684	27 378	59 114	29 176	21 721	47 761	186 464
January	47 334	83 789	13 228	29 012	32 659	31 483	17 714	16 327	28 376	119 338
February	57 587	66 413	22 843	49 748	29 728	56 641	27 861	23 395	75 021	209 483
March	69 002	96 254	26 863	67 132	28 321	59 413	22 364	26 579	39 860	182 126
April	59 320	49 119	26 023	52 619	22 885	51 075	33 261	18 598	61 197	185 838
May	49 537	30 815	26 604	63 287	21 142	47 286	17 553	16 373	50 567	166 869
June	83 248	19 843	21 783	60 136	21 859	56 675	15 479	17 994	59 211	180 155
<b>1997-98</b>										
July	75 629	33 014	27 348	60 342	25 538	52 568	31 626	15 779	55 728	188 841
August	80 052	22 224	43 757	72 624	22 840	51 202	21 497	16 567	56 418	175 270
September	25 569	14 786	43 831	78 983	31 036	64 291	21 904	22 130	53 486	181 726
October	26 220	10 435	55 170	89 768	41 074	52 380	27 201	10 146	41 807	149 108
November	92 413	20 124	26 808	56 869	26 403	63 804	33 108	27 738	68 769	221 244

(a) Final stage of production in South Australia.

## MANUFACTURING.....

Period	Agriculture, forestry and fishing	Mining	Food, beverages and tobacco	Petroleum, coal, chemical associated product	Metal product	Machinery and equipment	Other manu- facturing	Other industries/ confidential	Total
	\$'000	\$'000	\$'000	\$'000	\$'000	\$'000	\$'000	\$'000	\$'000
ANNUAL									
1991-92	882 011	248 846	702 148	201 681	541 522	381 737	178 485	294 709	3 431 139
1992-93	883 725	294 586	766 518	195 387	509 303	641 930	178 726	290 427	3 760 602
1993-94	733 014	245 247	884 737	180 147	475 060	665 066	208 573	497 938	3 889 783
1994-95	592 129	268 537	886 337	186 661	584 838	711 529	243 314	355 991	3 829 336
1995-96	1 014 521	226 309	978 332	172 285	639 267	674 131	226 496	567 191	4 498 532
1996-97	1 067 846	205 433	981 747	290 382	569 727	1 140 111	229 503	528 523	5 013 272
MONTHLY									
<b>1996-97</b>									
September	63 746	2 163	81 493	13 729	36 903	77 144	19 503	21 279	315 960
October	68 176	12 456	85 814	28 892	51 440	111 387	20 149	47 095	425 409
November	58 151	21 794	71 302	28 399	47 286	140 287	19 269	56 989	443 477
December	119 518	25 589	87 427	25 499	63 810	122 815	22 225	54 544	521 428
January	133 106	1 294	72 585	10 035	33 508	69 654	15 632	43 473	379 289
February	151 003	39 505	86 482	33 856	43 376	93 004	18 510	45 485	511 223
March	140 271	734	97 840	33 514	50 176	106 476	18 821	59 366	507 198
April	88 768	30 741	85 922	17 247	40 321	96 254	19 110	37 936	416 299
May	42 278	991	85 038	27 168	59 594	85 062	20 725	46 969	367 826
June	54 021	32 623	75 807	27 832	51 123	92 575	17 531	54 860	406 373
<b>1997-98</b>									
July	79 999	30 787	83 270	14 727	48 601	105 143	24 710	29 969	417 206
August	51 729	11 810	93 499	37 889	48 749	99 482	24 132	52 109	419 398
September	55 441	22 149	115 686	24 148	55 582	65 599	21 703	21 760	382 068
October	43 724	1 711	119 313	18 070	39 146	73 861	18 633	45 421	359 878
November	45 158	16 219	88 019	24 700	67 888	134 169	21 178	53 217	450 548

(a) Final stage of production in South Australia.



## 7

## MERCHANDISE IMPORTS, By Selected Commodity Group(a)

<i>Period</i>	<i>Food, beverages and tobacco</i>	<i>Petroleum and petroleum products</i>	<i>Chemicals</i>	<i>Textiles</i>	<i>Metals and metal manufactures</i>	<i>Machinery</i>	<i>Road, vehicles, parts and accessories</i>	<i>Other manufactured goods</i>	<i>Total</i>
	\$'000	\$'000	\$'000	\$'000	\$'000	\$'000	\$'000	\$'000	\$'000
ANNUAL									
1991-92	82 095	362 777	153 574	62 884	151 165	523 848	435 121	513 012	2 396 954
1992-93	91 756	570 334	186 001	57 434	255 924	609 212	661 714	521 723	3 068 122
1993-94	99 177	404 626	200 225	60 172	160 937	595 238	663 617	484 590	2 803 446
1994-95	115 930	330 430	220 536	64 524	214 432	695 038	749 658	563 368	3 099 510
1995-96	118 237	346 397	254 102	76 847	213 487	675 869	546 445	728 096	3 114 309
1996-97	136 695	505 633	225 187	79 708	223 257	868 346	538 690	695 239	3 413 041
MONTHLY									
<b>1996-97</b>									
September	10 374	23 728	12 227	7 797	18 405	69 155	39 198	101 380	290 140
October	15 412	50 886	14 652	6 584	18 722	72 108	48 332	46 905	283 909
November	13 043	25 966	15 236	5 015	21 111	76 107	42 335	58 621	267 488
December	13 786	47 488	25 644	5 443	12 397	75 884	33 169	82 398	310 393
January	9 935	24 997	24 943	8 035	20 890	107 391	42 244	52 370	300 286
February	9 788	52 619	16 510	6 087	20 531	96 667	45 732	46 861	303 870
March	8 356	50 383	28 119	5 065	14 786	50 785	44 387	46 896	257 380
April	10 428	58 416	18 075	7 691	19 477	62 146	55 134	50 015	297 599
May	11 588	45 354	19 293	6 467	15 123	54 510	35 983	48 198	246 008
June	9 424	39 315	20 252	7 109	20 567	66 474	54 586	48 671	283 145
<b>1997-98</b>									
July	10 522	66 543	14 284	6 788	22 112	107 446	83 398	56 472	376 198
August	12 198	29 929	13 911	6 372	24 951	75 144	82 196	53 131	306 001
September	13 380	61 141	13 489	7 031	21 982	79 599	57 850	81 326	343 966
October	15 074	2 053	12 863	8 282	22 569	76 623	67 994	56 696	271 647
November	14 010	67 170	16 009	7 530	21 297	75 912	55 378	51 328	321 783

(a) Goods released from Customs control in South Australia.

Period	Food retailing	Department stores	Clothing and soft good retailing	Household good retailing	Recreational good retailing	Other retailing	Hospitality and services	Total
ANNUAL (\$m)								
1991-92	3 223.7	1 087.4	472.4	833.1	289.6	537.7	1 198.4	7 642.5
1992-93	3 081.8	1 101.5	440.4	829.9	324.5	645.0	1 181.8	7 604.9
1993-94	3 253.3	1 107.8	479.0	917.8	378.1	684.0	1 338.8	8 158.8
1994-95	3 477.3	1 128.8	538.0	959.6	383.8	793.5	1 654.4	8 935.4
1995-96	3 786.5	1 138.5	546.7	1 025.6	431.2	902.8	1 762.0	9 593.2
1996-97	4 065.0	1 121.0	467.0	937.0	425.0	792.8	1 648.1	9 455.8

MONTHLY, ORIGINAL (\$m)								
<b>1996-97</b>								
September	317.2	80.4	33.4	77.1	33.7	63.0	135.1	739.8
October	350.2	93.0	37.0	77.6	37.4	64.0	133.3	792.5
November	343.5	105.6	37.4	80.0	39.3	64.9	141.2	812.0
December	382.2	170.4	51.9	101.8	56.6	91.1	178.7	1 032.7
January	351.1	79.3	37.1	70.3	33.4	60.5	142.1	774.0
February	317.3	69.7	28.1	67.0	28.7	56.5	127.1	694.5
March	350.0	82.7	34.9	70.1	32.0	60.7	131.9	762.4
April	331.2	86.2	45.3	73.3	32.6	65.0	128.4	762.1
May	344.6	96.2	45.3	77.2	32.0	71.3	132.4	798.8
June	320.2	80.0	40.7	74.9	29.6	63.9	132.5	741.8
<b>1997-98</b>								
July	355.0	97.9	45.8	83.1	31.6	67.5	123.7	804.6
August	349.6	80.5	38.7	83.6	32.0	65.9	127.5	777.8
September	348.9	84.8	38.8	84.3	33.1	65.8	121.1	776.9
October	370.4	92.0	46.3	94.3	34.6	76.1	126.5	840.2
November	365.4	105.6	45.6	95.5	36.6	79.2	129.0	856.9

MONTHLY, TREND (\$m)								
<b>1996-97</b>								
September	333.9	93.7	37.9	80.2	37.2	64.8	137.7	785.9
October	335.7	93.8	37.1	78.6	36.9	63.4	136.1	783.1
November	338.2	93.9	36.8	77.1	36.2	62.7	135.6	782.7
December	341.0	94.1	37.0	76.0	35.3	62.9	135.7	784.2
January	343.2	94.0	37.5	75.4	34.4	63.7	136.1	786.4
February	344.4	93.7	38.3	75.5	33.8	64.9	136.6	788.5
March	344.5	93.3	39.4	75.9	33.4	66.3	137.3	790.6
April	344.5	93.1	40.6	76.6	33.4	67.4	137.8	793.3
May	345.3	93.3	41.8	77.8	33.6	67.9	137.7	797.1
June	347.6	93.6	42.8	79.8	34.0	68.1	136.6	802.3
<b>1997-98</b>								
July	351.1	94.0	43.5	82.3	34.3	68.4	134.4	808.0
August	354.9	94.3	44.0	85.0	34.5	69.2	131.2	813.0
September	357.9	94.4	44.3	87.7	34.6	70.4	127.8	817.2
October	360.2	94.6	44.7	90.1	34.7	72.0	124.6	821.2
November	361.6	94.6	44.9	92.0	34.8	73.7	121.8	824.5

PERCENTAGE CHANGE FROM PREVIOUS MONTH, TREND								
<b>1996-97</b>								
September	0.4	0.0	-2.3	-1.7	0.5	-2.8	-1.8	-0.6
October	0.5	0.1	-2.1	-2.0	-0.8	-2.2	-1.2	-0.4
November	0.7	0.1	-0.8	-1.9	-1.9	-1.1	-0.4	-0.1
December	0.8	0.2	0.5	-1.4	-2.5	0.3	0.1	0.2
January	0.6	-0.1	1.4	-0.8	-2.5	1.3	0.3	0.3
February	0.3	-0.3	2.1	0.1	-1.7	1.9	0.4	0.3
March	0.0	-0.4	2.9	0.5	-1.2	2.2	0.5	0.3
April	0.0	-0.2	3.0	0.9	0.0	1.7	0.4	0.3
May	0.2	0.2	3.0	1.6	0.6	0.7	-0.1	0.5
June	0.7	0.3	2.4	2.6	1.2	0.3	-0.8	0.7
<b>1997-98</b>								
July	1.0	0.4	1.6	3.1	0.9	0.4	-1.6	0.7
August	1.1	0.3	1.1	3.3	0.6	1.2	-2.4	0.6
September	0.8	0.1	0.7	3.2	0.3	1.7	-2.6	0.5
October	0.6	0.2	0.9	2.7	0.3	2.3	-2.5	0.5
November	0.4	0.0	0.4	2.1	0.3	2.4	-2.2	0.4

## NEW MOTOR VEHICLES REGISTRATIONS, By Type of Vehicle

Period	ORIGINAL.....			SEASONALLY ADJUSTED.....			TREND ESTIMATE.....		
	Passenger vehicles	Other vehicles	Total	Passenger vehicles	Other vehicles	Total	Passenger vehicles	Other vehicles	Total
ANNUAL									
1991-92	32 351	5 333	37 684	..	..	..	..	..	..
1992-93	32 894	5 577	38 471	..	..	..	..	..	..
1993-94	32 806	5 781	38 587	..	..	..	..	..	..
1994-95	35 830	6 736	42 566	..	..	..	..	..	..
1995-96	36 067	6 828	42 895	..	..	..	..	..	..
1996-97	36 146	6 970	43 116	..	..	..	..	..	..
PERCENTAGE CHANGE FROM PREVIOUS YEAR									
1991-92	-6.9	-19.4	-8.9	..	..	..	..	..	..
1992-93	1.7	4.6	2.1	..	..	..	..	..	..
1993-94	-0.3	3.7	0.3	..	..	..	..	..	..
1994-95	9.2	16.5	10.3	..	..	..	..	..	..
1995-96	0.7	1.4	0.8	..	..	..	..	..	..
1996-97	0.2	2.1	0.5	..	..	..	..	..	..
MONTHLY									
<b>1996-97</b>									
September	2 939	498	3 437	2 877	557	3 434	2 806	570	3 376
October	2 817	548	3 365	2 598	548	3 146	2 830	556	3 386
November	2 976	539	3 515	2 921	533	3 454	2 900	554	3 454
December	2 997	585	3 582	3 003	581	3 584	2 990	564	3 553
January	2 493	449	2 942	3 118	576	3 694	3 079	581	3 660
February	3 302	525	3 827	3 307	574	3 881	3 152	598	3 749
March	3 034	593	3 627	3 091	622	3 713	3 193	608	3 801
April	3 015	701	3 716	3 263	673	3 936	3 205	608	3 813
May	3 028	612	3 640	3 075	562	3 637	3 211	599	3 810
June	3 659	780	4 439	3 357	593	3 951	3 237	587	3 824
<b>1997-98</b>									
July	3 351	545	3 896	3 227	539	3 766	3 288	576	3 863
August	3 368	508	3 876	3 274	574	3 848	3 358	568	3 926
September	3 619	555	4 174	3 487	577	4 064	3 432	566	3 998
October	3 775	560	4 335	3 537	573	4 110	3 502	564	4 066
November	3 663	534	4 197	3 605	560	4 165	3 571	568	4 139
PERCENTAGE CHANGE FROM PREVIOUS MONTH									
<b>1996-97</b>									
September	-2.8	-8.6	-3.7	0.0	-8.2	-1.5	-0.8	-3.1	-1.2
October	-4.2	10.0	-2.1	-9.7	-1.6	-8.4	0.9	-2.5	0.3
November	5.6	-1.6	4.5	12.4	-2.7	9.8	2.5	-0.4	2.0
December	0.7	8.5	1.9	2.8	9.0	3.8	3.1	1.8	2.9
January	-16.8	-23.2	-17.9	3.8	-0.9	3.1	3.0	3.0	3.0
February	32.5	16.9	30.1	6.1	-0.3	5.1	2.4	2.9	2.4
March	-8.1	13.0	-5.2	-6.5	8.4	-4.3	1.3	1.7	1.4
April	-0.6	18.2	2.5	5.6	8.2	6.0	0.4	0.0	0.3
May	0.4	-12.7	-2.0	-5.8	-16.5	-7.6	0.2	-1.5	-0.1
June	20.8	27.5	22.0	9.2	5.5	8.6	0.8	-2.0	0.4
<b>1997-98</b>									
July	-8.4	-30.1	-12.2	-3.9	-9.1	-4.7	1.6	-1.9	1.0
August	0.5	-6.8	-0.5	1.5	6.5	2.2	2.1	-1.4	1.6
September	7.5	9.3	7.7	6.5	0.5	5.6	2.2	-0.4	1.8
October	4.3	0.9	3.9	1.4	-0.7	1.1	2.0	-0.4	1.7
November	-3.0	-4.6	-3.2	1.9	-2.3	1.3	2.0	0.7	1.8

Period	INDUSTRY.....			Total	TYPE OF ASSET.....	
	Mining	Manu- facturing	Other selected industries		New buildings and structures	Equipment, plant and machinery
ANNUAL (\$m)						
1991-92	193	763	668	1 625	392	1 233
1992-93	218	564	739	1 522	416	1 105
1993-94	97	613	773	1 484	356	1 128
1994-95	115	829	1 162	2 106	351	1 755
1995-96	196	756	921	1 873	358	1 515
1996-97	488	839	1 250	2 577	593	1 984
PERCENTAGE CHANGE FROM PREVIOUS YEAR						
1991-92	58.4	2.9	-32.3	-12.2	-37.5	0.8
1992-93	12.8	-26.1	10.6	-6.4	6.1	-10.4
1993-94	-55.5	8.7	4.6	-2.5	-14.5	2.0
1994-95	18.3	35.2	50.3	41.9	-1.4	55.6
1995-96	70.4	-8.8	-20.7	-11.1	2.0	-13.7
1996-97	149.0	11.0	35.7	37.6	65.6	31.0
QUARTERLY, ORIGINAL (\$m)						
<b>1995-96</b>						
June	59	210	276	545	117	428
<b>1996-97</b>						
September	61	187	399	647	133	514
December	82	234	373	688	172	517
March	79	198	245	521	130	391
June	266	221	233	720	159	561
<b>1997-98</b>						
September	345	169	204	718	159	559
PERCENTAGE CHANGE FROM PREVIOUS QUARTER, ORIGINAL						
<b>1995-96</b>						
June	15.7	25.7	50.0	35.2	51.9	31.3
<b>1996-97</b>						
September	3.4	-11.0	44.6	18.7	13.7	20.1
December	34.4	25.1	-6.5	6.3	29.3	0.6
March	-3.7	-15.4	-34.3	-24.3	-24.4	-24.4
June	238.0	11.6	-4.5	38.8	23.1	44.0
<b>1997-98</b>						
September	29.2	-23.5	-12.8	-0.7	-0.6	-0.7
QUARTERLY, TREND (\$m)						
<b>1995-96</b>						
June	n.a.	n.a.	n.a.	566	117	449
<b>1996-97</b>						
September	n.a.	n.a.	n.a.	618	133	484
December	n.a.	n.a.	n.a.	629	148	481
March	n.a.	n.a.	n.a.	637	155	481
June	n.a.	n.a.	n.a.	685	158	526
<b>1997-98</b>						
September	n.a.	n.a.	n.a.	758	154	604
PERCENTAGE CHANGE FROM PREVIOUS QUARTER, TREND						
<b>1995-96</b>						
June	..	..	..	16.7	23.2	15.1
<b>1996-97</b>						
September	..	..	..	9.2	13.7	7.8
December	..	..	..	1.8	11.3	-0.6
March	..	..	..	1.3	4.7	0.0
June	..	..	..	7.5	1.9	9.4
<b>1997-98</b>						
September	..	..	..	10.7	-2.5	14.8

Period	HOTELS, MOTELS AND GUESTHOUSES WITH FACILITIES.....			HOLIDAY FLATS, UNITS AND HOUSES.....			SHORT-TERM CARAVAN PARKS.....		
	Guest rooms	Room occupancy	Takings	Flats, units and houses	Unit occupancy	Takings	Sites	Site occupancy	Takings
	no.	%	\$'000	no.	%	\$'000	no.	%	\$'000
ANNUAL									
1991-92	10 745	46.6	130 578	1 302	40.4	10 492	20 601	17.1	19 111
1992-93	10 632	46.5	129 882	1 338	40.2	10 740	20 038	22.3	20 113
1993-94	10 597	48.6	138 782	1 338	40.9	11 700	19 591	23.7	20 790
1994-95	10 594	51.3	149 698	1 342	40.0	11 644	20 175	24.5	22 537
1995-96	10 772	52.4	161 136	1 356	41.5	12 844	20 187	24.9	23 578
1996-97	10 895	52.6	164 227	1 467	42.2	14 615	20 248	25.2	24 336
PERCENTAGE CHANGE FROM PREVIOUS YEAR									
1991-92	2.9	..	1.5	7.6	..	1.5	4.1	..	5.6
1992-93	-1.1	..	-0.5	2.8	..	2.4	-2.7	..	5.2
1993-94	-0.3	..	6.9	0.0	..	8.9	-2.2	..	3.4
1994-95	0.0	..	7.9	0.3	..	-0.5	3.0	..	8.4
1995-96	1.7	..	7.6	1.0	..	10.3	0.1	..	4.6
1996-97	1.1	..	1.9	8.1	..	13.8	0.3	..	3.2
QUARTERLY									
<b>1995-96</b>									
June	10 865	51.4	39 121	1 451	38.0	2 940	20 122	25.0	5 736
<b>1996-97</b>									
September	10 879	48.9	37 567	1 426	35.1	2 885	20 247	21.0	4 735
December	10 951	54.9	43 266	1 470	40.7	3 651	20 260	25.2	6 340
March	10 909	55.4	43 033	1 493	54.1	4 895	20 251	30.4	7 742
June	10 842	51.1	40 361	1 477	38.8	3 184	20 233	24.3	5 519
<b>1997-98</b>									
September	10 885	52.2	41 722	1 465	35.1	2 964	20 844	22.3	5 273
PERCENTAGE CHANGE FROM PREVIOUS QUARTER									
<b>1995-96</b>									
June	1.0	..	-6.7	4.5	..	-34.8	-0.2	..	-17.2
<b>1996-97</b>									
September	0.1	..	-4.0	-1.7	..	-1.9	0.6	..	-17.5
December	0.7	..	15.2	3.1	..	26.6	0.1	..	33.9
March	-0.4	..	-0.5	1.6	..	34.1	0.0	..	22.1
June	-0.6	..	-6.2	-1.1	..	-35.0	-0.1	..	-28.7
<b>1997-98</b>									
September	0.4	..	3.4	-0.8	..	-6.9	3.0	..	-4.5

Period	NEW HOUSES.....		TOTAL DWELLING UNITS.....		New residential building \$m	Alterations and additions to residential building \$m	Non-residential building \$m	Total building \$m
	Private sector	Total	Private sector	Total				
	no.	no.	no.	no.				
ANNUAL								
1991-92	8 613	8 931	10 254	11 290	756	124	627	1 506
1992-93	9 710	10 087	11 548	12 341	841	133	418	1 392
1993-94	9 470	9 901	11 046	11 777	839	122	375	1 336
1994-95	7 757	8 147	9 208	9 762	740	120	493	1 353
1995-96	4 930	5 109	5 760	5 968	469	119	566	1 155
1996-97	5 508	5 604	6 148	6 264	516	117	581	1 213
MONTHLY, ORIGINAL								
<b>1996-97</b>								
October	401	414	553	566	43.7	12.0	28.5	84.2
November	438	438	488	488	39.9	8.8	39.7	88.5
December	382	383	409	410	34.8	9.7	28.0	72.5
January	340	340	351	351	29.6	8.6	41.9	80.1
February	429	434	467	472	39.7	9.8	53.1	102.6
March	486	501	526	543	41.8	8.9	35.4	86.1
April	559	568	615	628	52.6	10.9	39.2	102.8
May	537	551	599	620	52.5	9.9	64.7	127.1
June	518	540	571	597	49.5	9.2	- 92.0	150.7
<b>1997-98</b>								
July	571	583	622	634	51.1	10.8	125.1	187.0
August	513	529	552	568	49.3	10.1	63.8	123.2
September	505	527	570	600	51.9	10.7	58.6	121.1
October	523	538	584	599	51.2	12.0	34.1	97.4
November	482	490	544	552	51.2	11.1	64.5	126.7
MONTHLY, TREND								
<b>1996-97</b>								
October	414	422	479	489	n.a.	n.a.	n.a.	n.a.
November	419	426	474	482	n.a.	n.a.	n.a.	n.a.
December	433	439	476	483	n.a.	n.a.	n.a.	n.a.
January	457	461	490	495	n.a.	n.a.	n.a.	n.a.
February	484	489	516	523	n.a.	n.a.	n.a.	n.a.
March	508	514	547	556	n.a.	n.a.	n.a.	n.a.
April	521	530	570	581	n.a.	n.a.	n.a.	n.a.
May	522	533	578	592	n.a.	n.a.	n.a.	n.a.
June	512	525	570	586	n.a.	n.a.	n.a.	n.a.
<b>1997-98</b>								
July	498	514	554	572	n.a.	n.a.	n.a.	n.a.
August	487	505	540	560	n.a.	n.a.	n.a.	n.a.
September	481	502	531	554	n.a.	n.a.	n.a.	n.a.
October	478	499	526	550	n.a.	n.a.	n.a.	n.a.
November	481	504	523	548	n.a.	n.a.	n.a.	n.a.
PERCENTAGE CHANGE FROM PREVIOUS MONTH, TREND								
<b>1996-97</b>								
November	1.0	0.7	-1.0	-1.4	..	..	..	..
December	3.1	2.6	0.4	0.2	..	..	..	..
January	5.1	4.8	2.9	2.5	..	..	..	..
February	6.2	6.1	5.3	5.7	..	..	..	..
March	5.2	5.3	6.0	6.3	..	..	..	..
April	2.8	3.1	4.2	4.5	..	..	..	..
May	0.0	0.4	1.4	1.9	..	..	..	..
June	-2.1	-1.5	-1.4	-1.0	..	..	..	..
<b>1997-98</b>								
July	-2.7	-2.3	-2.8	-2.4	..	..	..	..
August	-2.2	-1.6	-2.5	-2.1	..	..	..	..
September	-1.0	-0.4	-1.7	-1.1	..	..	..	..
October	-0.6	0.0	-0.9	-0.7	..	..	..	..
November	1.0	1.2	-0.6	-0.4	..	..	..	..

# 13

## BUILDING COMMENCEMENTS

Period	NEW HOUSES.....		TOTAL DWELLING UNITS(a).....		Alterations New and additions residential to residential building building		NON-RESIDENTIAL BUILDING.....		
	Private sector	Total	Private sector	Total			Private sector	Total	Total building
	no.	no.	no.	no.	\$m	\$m	\$m	\$m	\$m
ANNUAL									
1991-92	8 036	8 344	9 635	10 700	727.2	125.1	344.5	607.8	1 460.1
1992-93	9 122	9 416	10 889	11 646	816.2	122.4	205.5	458.7	1 397.2
1993-94	9 159	9 590	10 712	11 501	845.3	126.5	209.9	373.0	1 344.8
1994-95	7 745	8 210	9 132	9 796	765.5	125.3	251.7	518.5	1 409.3
1995-96	4 836	5 070	5 691	5 960	496.5	121.7	452.8	631.8	1 250.0
1996-97	5 057	5 113	5 704	5 790	496.3	116.9	423.4	568.8	1 181.9
QUARTERLY									
<b>1995-96</b>									
March	1 044	1 089	1 237	1 295	109.2	29.4	80.1	139.9	278.4
June	1 153	1 183	1 273	1 307	111.0	28.8	217.7	264.0	403.9
<b>1996-97</b>									
September	1 191	1 207	1 302	1 321	108.7	26.2	67.9	104.2	239.1
December	1 245	1 262	1 513	1 530	133.8	33.8	85.3	113.2	280.8
March	1 099	1 102	1 242	1 247	106.3	26.2	76.6	121.2	253.6
June	1 522	1 541	1 655	1 691	147.5	30.7	193.5	230.2	408.4
<b>1997-98</b>									
September	1 331	1 376	1 451	1 509	129.5	30.9	70.8	97.3	257.7

(a) Includes conversions.

Period	NEW HOUSES...		NEW RESIDENTIAL BUILDING.....		Alterations and additions to residential building	NON-RESIDENTIAL BUILDING.....		TOTAL BUILDING...	
	Private sector	Total	Private sector	Total		Private sector	Total	Private sector	Total
	\$m	\$m	\$m	\$m		\$m	\$m	\$m	\$m
ANNUAL									
1991-92	591.5	607.5	693.4	748.5	125.1	310.3	484.1	1 127.5	1 357.6
1992-93	647.2	660.9	743.8	780.6	127.1	297.9	570.9	1 166.3	1 478.6
1993-94	719.1	746.4	828.9	876.3	132.0	217.7	462.1	1 177.2	1 470.4
1994-95	659.6	693.6	766.1	816.4	129.4	271.6	476.9	1 164.3	1 422.7
1995-96	441.4	460.5	512.9	534.8	130.6	311.4	542.1	953.2	1 207.5
1996-97	433.9	438.9	485.2	490.4	122.2	444.2	663.3	1 049.8	1 275.9
QUARTERLY									
<b>1995-96</b>									
June	102.6	105.0	117.6	120.3	32.6	88.1	155.6	238.3	308.5
<b>1996-97</b>									
September	97.3	99.3	109.4	111.3	28.0	83.4	143.8	219.4	283.1
December	109.1	110.6	121.3	122.8	35.4	119.6	189.8	276.0	348.0
March	99.9	100.3	114.1	114.6	26.8	100.8	147.8	241.6	289.2
June	127.6	128.7	140.5	141.7	32.0	140.4	181.9	312.8	355.6
<b>1997-98</b>									
September	121.6	124.8	135.3	138.8	31.9	141.7	179.0	308.4	349.7



Period	Pigmeat	Beef	Mutton	Lamb	Gas	Coal	Sawn timber(a)
	tonnes	tonnes	tonnes	tonnes	m MJ	tonnes	m <sup>3</sup>
ANNUAL							
1991-92	34 538	90 661	72 578	29 941	78 210	2 819 880	271 603
1992-93	38 153	96 338	65 689	39 334	83 000	2 753 610	317 096
1993-94	38 394	94 395	71 354	45 199	89 382	2 643 000	364 961
1994-95	32 063	99 108	66 759	36 147	86 123	2 554 560	392 349
1995-96	31 695	89 704	55 600	37 735	76 074	2 409 120	413 545
1996-97	29 853	85 350	56 875	35 081	76 495	2 633 820	333 691
PERCENTAGE CHANGE FROM PREVIOUS YEAR							
1991-92	-10.6	4.2	10.9	-6.5	6.7	15.5	13.1
1992-93	10.5	6.3	-9.5	31.4	6.1	-2.4	16.7
1993-94	0.6	-2.0	8.6	14.9	7.7	-4.0	15.1
1994-95	-16.5	5.0	-6.4	-20.0	-3.6	-3.3	7.5
1995-96	-1.1	-9.5	-16.7	4.4	-11.7	-5.7	5.4
1996-97	-5.8	-4.9	2.3	-7.0	0.6	9.3	-19.3
MONTHLY/QUARTERLY							
<b>1996-97</b>							
October	2 232	8 130	5 528	3 422	..	..	..
November	2 629	8 930	7 351	2 983	..	..	..
December	2 000	6 681	4 500	2 574	17 673	550 380	86 509
January	2 136	7 333	5 815	3 247	..	..	..
February	2 570	7 223	6 057	3 154	..	..	..
March	2 202	6 845	5 396	2 899	17 945	684 780	68 403
April	2 508	8 355	5 632	3 501	..	..	..
May	2 828	7 606	4 063	3 469	..	..	..
June	2 533	7 168	3 382	3 304	19 777	720 300	83 742
<b>1997-98</b>							
July	2 447	6 810	1 890	1 464	..	..	..
August	2 669	6 031	4 760	2 396	..	..	..
September	2 323	5 832	5 513	2 782	21 942	752 868	91 537
October	2 243	7 868	5 764	3 860	..	..	..
November	2 857	7 855	6 253	3 242	..	..	..
PERCENTAGE CHANGE FROM PREVIOUS MONTH/QUARTER							
<b>1996-97</b>							
October	-3.3	22.3	48.1	23.3	..	..	..
November	17.8	9.8	33.0	-12.8	..	..	..
December	-23.9	-25.2	-38.8	-13.7	-16.2	-18.9	-9.0
January	6.8	9.8	29.2	26.1	..	..	..
February	20.3	-1.5	4.2	-2.9	..	..	..
March	-14.3	-5.2	-10.9	-8.1	1.5	24.4	-20.9
April	13.9	22.1	4.4	20.8	..	..	..
May	12.8	-9.0	-27.9	-0.9	..	..	..
June	-10.4	-5.8	-16.8	-4.8	10.2	5.2	22.4
<b>1997-98</b>							
July	-3.4	-5.0	-44.1	-9.0	..	..	..
August	9.1	-11.4	151.9	-61.2	..	..	..
September	-13.0	-3.3	15.8	38.6	10.9	4.5	9.3
October	-3.4	34.9	4.6	38.7	..	..	..
November	27.4	-0.2	8.5	-16.0	..	..	..

(a) From Australian softwood logs only

Period	Food	Clothing	Housing	Household equipment and operation	Transport- ation	Tobacco and alcohol	Health and personal care	Recreation and education	All groups
ANNUAL AVERAGE (1989-90 = 100)									
1991-92	106.0	105.3	100.4	107.5	110.5	118.6	127.8	107.7	108.9
1992-93	109.3	107.0	94.3	107.6	115.0	131.2	134.9	110.7	111.2
1993-94	111.7	106.6	92.1	108.0	117.8	141.5	142.7	113.7	113.4
1994-95	115.1	104.9	97.8	109.2	120.2	148.9	151.3	116.3	116.9
1995-96	118.2	105.1	103.6	112.1	124.5	160.1	158.9	118.0	121.2
1996-97	120.8	105.5	98.9	113.4	124.6	165.3	165.4	121.1	122.3
PERCENTAGE CHANGE FROM PREVIOUS YEAR, ANNUAL AVERAGE									
1991-92	2.1	1.6	-3.6	2.0	3.3	5.9	12.7	2.8	2.5
1992-93	3.1	1.6	-6.1	0.1	4.1	10.6	5.6	2.8	2.1
1993-94	2.2	-0.4	-2.3	0.4	2.4	7.9	5.8	2.7	2.0
1994-95	3.0	-1.6	6.2	1.1	2.0	5.2	6.0	2.2	3.1
1995-96	2.7	0.2	5.9	2.7	3.6	7.6	5.0	1.5	3.7
1996-97	2.2	0.3	-4.5	1.2	0.0	3.3	4.1	2.6	0.9
QUARTERLY (1989-90 = 100.0)									
<b>1995-96</b>									
June	118.4	105.5	103.9	112.3	125.3	163.6	160.6	119.2	122.0
<b>1996-97</b>									
September	119.2	105.5	103.5	113.0	124.4	164.7	160.9	119.2	122.2
December	120.7	106.0	100.5	113.8	125.5	164.9	164.9	119.8	122.6
March	121.2	105.1	97.5	113.3	125.6	165.2	167.7	122.3	122.6
June	121.9	105.2	94.1	113.6	122.7	166.5	168.0	122.9	121.9
<b>1997-98</b>									
September	122.0	105.4	92.2	113.6	123.2	167.2	158.6	123.7	121.2
PERCENTAGE CHANGE FROM SAME QUARTER OF PREVIOUS YEAR									
<b>1995-96</b>									
June	2.3	0.4	1.7	1.9	3.2	6.8	3.4	2.3	2.7
<b>1996-97</b>									
September	1.2	0.7	0.8	1.3	0.0	6.4	3.5	2.3	1.7
December	2.1	0.8	-3.2	1.6	1.0	3.3	3.9	2.1	1.2
March	2.5	0.2	-6.2	0.8	1.4	1.8	4.2	2.9	0.8
June	3.0	-0.3	-9.4	1.2	-2.1	1.8	4.6	3.1	-0.1
<b>1997-98</b>									
September	2.3	-0.1	10.9	0.5	-1.0	1.5	-1.4	3.8	-0.8
PERCENTAGE CHANGE FROM PREVIOUS QUARTER									
<b>1995-96</b>									
June	0.2	0.6	0.0	-0.1	1.1	0.9	-0.2	0.3	0.3
<b>1996-97</b>									
September	0.7	0.0	-0.4	0.6	-0.7	0.7	0.2	0.0	0.2
December	1.3	0.5	-2.9	0.7	0.9	0.1	2.5	0.5	0.3
March	0.4	-0.8	-3.0	-0.4	0.1	0.2	1.7	2.1	0.0
June	0.6	0.1	-3.5	0.3	-2.3	0.8	0.2	0.5	-0.6
<b>1997-98</b>									
September	0.1	0.2	-2.0	0.0	0.4	0.4	-5.6	0.7	-0.6

Item	Unit	QUARTER.....				
		Sep 1996	Dec 1996	Mar 1997	June 1997	Sep 1997
		cents	cents	cents	cents	cents
Milk, carton, supermarket sales	1 L	114	116	116	122	122
Cheese, processed, sliced, wrapped	500 g	322	318	318	320	323
Butter	500 g	160	172	167	161	164
Bread, white loaf, sliced, supermarket sales	680 g	154	157	153	160	161
Self-raising flour	2 kg	243	227	240	235	239
Beef						
Rump steak	1 kg	1 123	1 061	1 157	1 141	1 135
Corned silverside	1 kg	624	625	597	602	626
Lamb						
Leg	1 kg	586	563	572	574	565
Loin chops	1 kg	808	778	799	792	794
Forequarter chops	1 kg	555	528	568	547	534
Pork						
Leg	1 kg	621	617	616	574	622
Loin chops	1 kg	778	793	799	792	802
Chicken, frozen	1 kg	369	375	351	370	362
Bacon, middle rashers	250 g pkt	292	317	325	295	321
Sausages	1 kg	351	351	359	360	360
Potatoes	1 kg	67	73	78	108	111
Onions	1 kg	83	128	134	114	127
Peaches, canned	825 g	174	190	182	185	188
Eggs, 55g	doz	239	248	246	246	239
Sugar, white	2 kg	182	182	183	182	185
Tea	250 g	168	172	169	175	182
Coffee, instant, jar	150 g	509	513	500	539	573
Margarine, polyunsaturated	500 g	139	143	141	133	144
Petrol						
Leaded	1 L	73.6	76.1	77.5	75.4	74.5
Unleaded	1 L	71.3	73.7	75.2	73.0	72.2

## NET MIGRATION...

Period	Live births(a)	Deaths(a)	Natural increase	Interstate	Overseas(b)	Total increase	Population at end of period
ANNUAL							
1991-92	19 530	11 035	8 532	- 133	2 897	11 296	1 456 523
1992-93	19 686	11 163	8 403	-4 650	1 546	5 299	1 460 730
1993-94	20 036	11 743	7 949	-3 466	1 994	6 477	1 466 127
1994-95	19 559	11 496	7 902	-6 529	2 883	4 256	1 469 411
1995-96	10 916	11 186	7 645	-6 238	4 119	5 526	1 474 253
1996-97	18 934	11 577	7 258	-5 185	3 480	5 553	1 479 806

## MONTHLY/QUARTERLY

<b>1995-96</b>							
June	1 448	886	1 818	-1 090	753	1 481	1 474 253
<b>1996-97</b>							
July	1 732	1 102	..	..	..	..	..
August	1 662	1 207	..	..	..	..	..
September	1 464	977	1 575	-1 746	902	731	1 474 984
October	1 779	1 196	..	..	..	..	..
November	1 536	835	..	..	..	..	..
December	1 424	920	1 780	-1 565	1 003	1 218	1 476 202
January	1 582	910	..	..	..	..	..
February	1 498	827	..	..	..	..	..
March	1 301	756	1 880	-1 368	1 228	1 740	1 477 942
April	1 674	934	..	..	..	..	..
May	1 806	1 079	..	..	..	..	..
June	1 492	949	2 023	-506	347	1 864	1 479 806

(a) Registrations.

(b) Includes category jumping.

Period	EMPLOYED FULL-TIME.....		EMPLOYED PART-TIME.....		TOTAL EMPLOYED.....		UNEMPLOYED..		LABOUR FORCE.....	
	Males	Females	Males	Females	Males	Females	Males	Females	Males	Females
ANNUAL AVERAGE ('000)										
1991-92	323.3	145.7	37.5	121.6	360.8	267.3	50.0	29.3	410.8	296.6
1992-93	322.2	143.2	39.2	126.8	361.4	270.0	51.9	29.9	413.3	299.9
1993-94	322.0	146.3	40.0	127.0	362.0	273.3	47.3	29.9	409.3	303.2
1994-95	323.1	151.5	42.6	131.3	365.7	282.8	44.6	28.7	410.3	311.5
1995-96	325.2	150.0	45.5	136.7	370.7	286.7	42.6	26.0	413.2	312.7
1996-97	320.8	150.5	48.6	140.7	369.4	291.2	42.1	27.5	411.5	318.7
MONTHLY, ORIGINAL ('000)										
<b>1996-97</b>										
December	327.6	153.0	46.3	139.7	373.8	292.7	41.3	29.3	415.1	322.0
January	321.3	151.3	44.8	133.5	366.2	284.8	44.9	28.8	411.0	313.6
February	320.5	152.4	47.6	140.0	368.1	292.3	44.2	30.2	412.3	322.5
March	318.6	148.6	54.9	145.6	373.5	294.1	41.6	29.5	415.1	323.6
April	319.9	148.2	49.3	143.2	369.2	291.5	43.8	27.4	413.0	318.8
May	318.3	149.2	51.6	140.2	369.9	289.4	44.0	25.7	413.9	315.1
June	324.9	151.1	49.1	141.6	374.0	292.7	41.4	26.8	415.4	319.5
<b>1997-98</b>										
July	325.9	149.3	47.5	140.1	373.4	289.4	40.9	27.0	414.3	316.5
August	323.3	148.8	50.3	141.6	374.1	290.4	42.5	27.4	415.3	311.6
September	324.0	148.5	50.6	141.7	374.7	290.3	42.5	27.3	419.9	317.5
October	324.1	145.2	49.6	143.6	373.7	288.8	43.2	26.6	416.9	315.4
November	324.0	147.8	49.2	142.4	373.2	290.3	42.5	26.7	415.8	317.0
December	329.8	151.7	47.1	135.8	376.9	287.5	42.8	28.3	419.7	315.8
MONTHLY, TREND ('000)										
<b>1996-97</b>										
December	320.7	150.1	47.3	141.3	368.0	291.4	41.6	27.3	409.6	318.7
January	321.1	150.1	47.6	141.9	368.7	292.0	41.6	27.1	410.3	319.1
February	321.2	150.3	48.1	142.1	369.3	292.4	42.0	27.1	411.3	319.5
March	321.1	150.7	48.9	141.7	370.0	292.4	42.6	27.1	412.6	319.5
April	321.4	150.8	49.4	140.9	370.8	291.7	43.1	27.3	413.9	319.0
May	322.2	150.5	49.8	140.0	372.0	290.5	43.4	27.6	415.4	318.1
June	323.3	149.6	49.8	139.4	373.1	289.0	43.5	27.8	416.6	316.8
<b>1997-98</b>										
July	324.2	148.2	49.9	140.1	374.1	288.3	43.5	28.0	417.6	316.3
August	324.6	147.0	50.0	141.0	374.6	288.0	43.4	28.0	418.0	316.0
September	324.6	146.1	50.0	142.0	374.6	288.1	43.4	27.9	418.0	316.0
October	324.3	145.8	49.8	142.3	374.1	288.1	43.5	27.8	417.6	315.9
November	324.0	145.9	49.5	142.0	373.5	287.9	43.6	27.7	417.1	315.6
December	323.4	146.2	49.3	141.3	372.7	287.5	43.7	27.5	416.4	315.0
PERCENTAGE CHANGE FROM PREVIOUS MONTH, TREND										
<b>1996-97</b>										
December	0.2	-0.1	-0.6	0.4	0.1	0.1	-0.2	-0.7	0.0	0.1
January	0.1	0.0	0.6	0.4	0.2	0.2	0.0	-0.7	0.2	0.1
February	0.0	0.1	1.1	0.1	0.2	0.1	1.0	0.0	0.2	0.1
March	0.0	0.3	1.7	-0.3	0.2	0.0	1.4	0.0	0.3	0.0
April	0.1	0.1	1.0	-0.6	0.2	-0.2	1.2	0.7	0.3	-0.2
May	0.2	-0.2	0.6	-0.6	0.3	-0.4	0.7	1.1	0.4	-0.3
June	0.3	-0.7	0.2	-0.3	0.3	-0.5	0.2	0.7	0.3	-0.4
<b>1997-98</b>										
July	0.3	-0.9	0.0	0.4	0.2	-0.3	-0.0	0.7	0.2	-0.2
August	0.1	-0.8	0.2	0.6	0.1	-0.1	-0.2	0.0	0.1	-0.1
September	0.0	-0.6	0.2	0.7	0.0	0.1	0.0	-0.4	0.0	0.0
October	-0.1	-0.2	-0.4	0.2	-0.1	0.0	0.2	-0.4	-0.1	0.0
November	-0.1	0.1	-0.6	-0.8	-0.2	-0.1	0.2	-0.4	-0.1	-0.1
December	-0.2	0.2	-0.4	-0.5	-0.2	-0.1	0.2	-0.7	-0.2	-0.2

(a) Population aged 15 and over.

Period	CIVILIAN POPULATION.....		UNEMPLOYMENT RATE.....				PARTICIPATION RATE..		
	<i>Males aged 15 and over</i>	<i>Females aged 15 and over</i>	<i>Persons aged 15-19</i>	<i>Males all ages</i>	<i>Females all ages</i>	<i>Persons all ages</i>	<i>Males</i>	<i>Females</i>	<i>Persons</i>
	'000	'000	%	%	%	%	%	%	%
ANNUAL AVERAGE									
1991-92	563.9	585.4	25.0	12.1	9.9	11.2	72.9	50.7	61.6
1992-93	567.4	588.9	26.6	12.6	10.0	11.5	72.8	51.0	61.7
1993-94	570.6	592.0	28.3	11.5	9.8	10.8	71.7	51.2	61.3
1994-95	573.7	594.7	25.2	10.9	9.2	10.2	71.5	52.4	61.8
1995-96	576.2	597.1	27.2	10.3	8.3	9.5	71.7	52.4	61.9
1996-97	579.8	600.6	23.7	10.2	8.6	9.5	71.0	53.1	61.9
PERCENTAGE CHANGE FROM PREVIOUS YEAR,									
1991-92	1.0	1.0	..	..	..	..	..	..	..
1992-93	0.6	0.6	..	..	..	..	..	..	..
1993-94	0.6	0.6	..	..	..	..	..	..	..
1994-95	0.6	0.5	..	..	..	..	..	..	..
1995-96	0.4	0.5	..	..	..	..	..	..	..
1996-97	0.6	0.4	..	..	..	..	..	..	..
MONTHLY, ORIGINAL									
<b>1996-97</b>									
October	579.1	599.9	20.7	10.0	8.5	9.3	70.4	53.2	61.7
November	579.5	600.2	22.2	10.1	8.0	9.2	70.8	52.3	61.4
December	579.8	600.5	25.9	9.9	9.1	9.6	71.6	53.6	62.5
January	580.0	600.7	22.9	10.9	9.2	10.2	70.9	52.2	61.4
February	580.3	601.0	23.5	10.7	9.4	10.1	71.1	53.7	62.2
March	580.5	601.2	22.7	10.0	9.1	9.6	71.5	53.8	62.5
April	580.8	601.5	26.7	10.6	8.6	9.7	71.1	53.0	61.9
May	581.1	601.8	23.7	10.6	8.2	9.6	71.2	52.4	61.6
June	581.5	602.2	24.3	10.0	8.4	9.3	71.4	53.1	62.1
<b>1997-98</b>									
July	581.9	602.6	21.6	9.9	8.5	9.3	71.2	52.5	61.7
August	582.3	602.9	21.2	10.1	8.2	9.3	71.3	51.7	61.3
September	582.7	603.3	23.2	10.6	8.7	9.8	72.1	52.6	62.2
October	583.1	603.7	22.5	10.4	8.4	9.5	71.5	52.2	61.7
November	583.6	604.1	20.9	10.2	8.4	9.5	71.3	52.5	61.7
December	584.0	604.5	23.3	10.2	8.9	9.7	71.9	52.2	61.9
MONTHLY, TREND									
<b>1996-97</b>									
October	n.a.	n.a.	n.a.	10.2	8.7	9.5	70.7	53.1	61.7
November	n.a.	n.a.	n.a.	10.2	8.6	9.5	70.6	53.1	61.7
December	n.a.	n.a.	n.a.	10.1	8.6	9.5	70.6	53.1	61.7
January	n.a.	n.a.	n.a.	10.1	8.5	9.4	70.7	53.1	61.8
February	n.a.	n.a.	n.a.	10.2	8.5	9.5	70.9	53.2	61.9
March	n.a.	n.a.	n.a.	10.3	8.5	9.5	71.1	53.2	62.0
April	n.a.	n.a.	n.a.	10.4	8.6	9.6	71.3	53.1	62.0
May	n.a.	n.a.	n.a.	10.5	8.7	9.7	71.5	52.9	62.0
June	n.a.	n.a.	n.a.	10.4	8.8	9.7	71.6	52.6	62.0
<b>1997-98</b>									
July	n.a.	n.a.	n.a.	10.4	8.8	9.7	71.8	52.5	62.0
August	n.a.	n.a.	n.a.	10.4	8.9	9.7	71.8	52.4	61.9
September	n.a.	n.a.	n.a.	10.4	8.8	9.7	71.7	52.4	61.9
October	n.a.	n.a.	n.a.	10.4	8.8	9.7	71.6	52.3	61.8
November	n.a.	n.a.	n.a.	10.4	8.8	9.7	71.5	52.2	61.7
December	n.a.	n.a.	n.a.	10.5	8.7	9.7	71.3	52.1	61.5

(a) Population aged 15 and over.

Period	FULL-TIME ADULTS.....						ALL EMPLOYEES.....		
	Ordinary time earnings.....			Total earnings.....			Total earnings.....		
	Males	Females	Persons	Males	Females	Persons	Males	Females	Persons
ANNUAL AVERAGE (\$ per week)									
1991-92	588.40	524.10	567.80	624.90	534.00	595.80	564.80	386.90	483.70
1992-93	610.10	534.90	585.40	646.40	546.80	613.70	560.00	382.60	477.40
1993-94	625.10	547.60	600.00	667.50	560.10	632.70	595.10	396.60	503.30
1994-95	632.70	559.10	608.20	681.70	572.50	645.30	599.90	411.90	513.40
1995-96	653.80	555.90	622.80	703.15	568.50	660.05	620.10	403.90	520.65
1996-97	678.20	575.10	644.33	735.08	589.35	687.20	636.85	408.73	529.78
PERCENTAGE CHANGE FROM PREVIOUS YEAR									
1991-92	4.8	7.8	5.6	4.3	7.6	5.1	3.3	8.0	4.7
1992-93	3.7	2.1	3.1	3.4	2.4	3.0	-0.8	-1.1	-1.3
1993-94	2.5	2.4	2.5	3.3	2.4	3.1	6.3	3.7	5.4
1994-95	1.2	2.1	1.4	2.1	2.2	2.0	0.8	3.9	2.0
1995-96	3.3	-0.6	2.4	3.1	-0.7	2.3	3.4	-1.9	1.4
1996-97	3.7	3.5	3.5	4.5	3.7	4.1	2.7	1.2	1.8
QUARTERLY (\$ per week)									
<b>1995-96</b>									
17 May	668.90	557.10	633.80	721.40	571.80	674.40	640.50	408.30	534.60
<b>1996-97</b>									
16 August	666.70	562.40	632.40	720.10	574.40	672.30	628.50	403.60	523.60
15 November	669.60	575.30	639.50	728.30	591.80	684.80	626.80	402.30	522.20
21 February	685.60	578.20	649.70	741.90	594.00	692.40	639.80	409.50	530.80
16 May	690.90	584.50	655.70	750.00	597.20	699.30	652.30	419.50	542.50
<b>1997-98</b>									
15 August	703.90	583.70	663.40	756.20	593.50	701.40	651.00	420.00	542.50
PERCENTAGE CHANGE FROM CORRESPONDING REFERENCE DATE IN PREVIOUS YEAR									
<b>1995-96</b>									
17 May	5.3	-1.2	3.6	5.3	-1.0	3.8	6.6	-0.6	4.1
<b>1996-97</b>									
16 August	4.2	0.4	3.0	5.2	0.5	3.8	4.6	-1.2	2.6
15 November	3.4	4.8	3.8	5.1	5.5	5.2	3.2	1.5	2.3
21 February	4.1	3.8	3.7	4.0	4.3	3.8	1.3	1.8	0.7
16 May	3.3	4.9	3.5	4.0	4.4	3.7	1.8	2.7	1.5
<b>1997-98</b>									
15 August	5.6	3.8	4.9	5.0	3.3	4.3	3.6	4.1	3.6
PERCENTAGE CHANGE FROM PREVIOUS REFERENCE DATE									
<b>1995-96</b>									
17 May	1.5	0.0	1.2	1.1	0.4	1.1	1.4	1.5	1.4
<b>1996-97</b>									
16 August	-0.3	1.0	-0.2	-0.2	0.5	-0.3	-1.9	-1.2	-2.1
15 November	0.4	2.3	1.1	1.1	3.0	1.9	-0.3	-0.3	-0.3
21 February	2.4	0.5	1.6	1.9	0.4	1.1	2.1	1.8	1.6
16 May	0.8	1.1	0.9	1.1	0.5	1.0	2.0	2.4	2.2
<b>1997-98</b>									
15 August	1.9	-0.1	1.2	0.8	-0.6	0.3	-0.2	0.1	0.0

SECURED HOUSING  
FINANCE COMMITMENTS ..

Period	Dwelling	Value	Alterations	Personal	Commercial	Lease
	units		and	finance	finance	finance
			additions	commitments	commitments	commitments
	no.	\$m	\$m	\$m	\$m	\$m
ANNUAL						
1991-92	31 765	2 083.8	88.8	1 456.7	6 667.9	256.2
1992-93	36 960	2 569.5	102.8	1 656.9	5 122.5	249.5
1993-94	45 725	3 387.9	221.8	1 840.3	5 467.2	250.6
1994-95	36 429	2 879.7	242.2	2 152.2	5 405.6	271.4
1995-96	38 707	2 982.2	240.7	2 211.5	6 516.2	265.4
1996-97	36 680	2 956.1	188.1	2 612.0	6 092.4	232.0
PERCENTAGE CHANGE FROM PREVIOUS YEAR						
1991-92	10.7	20.4	51.0	-3.1	6.6	-20.7
1992-93	16.4	23.3	15.8	13.7	-23.2	-2.6
1993-94	23.7	31.9	115.7	11.1	6.7	0.5
1994-95	-20.3	-15.0	9.2	16.9	-1.1	8.3
1995-96	6.3	3.6	-0.6	2.8	20.5	-2.2
1996-97	-5.2	-0.9	-21.9	18.1	-6.5	-12.6
MONTHLY						
<b>1996-97</b>						
September	3 064	250.6	19.4	175.0	491.6	22.2
October	2 965	233.6	14.0	203.6	444.8	15.3
November	3 115	248.1	14.2	188.8	541.7	17.8
December	2 995	251.5	13.1	220.7	615.6	19.2
January	2 885	231.3	15.3	221.0	409.1	13.7
February	3 013	246.6	16.4	214.4	415.3	15.3
March	3 117	251.4	12.9	241.7	526.5	13.9
April	3 318	270.4	15.5	251.6	487.5	21.6
May	3 228	264.5	14.8	251.7	561.6	20.7
June	3 172	253.3	11.9	249.8	497.9	30.6
<b>1997-98</b>						
July	3 004	243.4	10.8	278.3	640.2	29.8
August	3 085	251.1	10.4	204.6	377.0	21.8
September	3 034	252.7	9.9	218.5	556.2	21.7
October	3 134	265.1	12.9	231.5	619.2	21.6
November	2 996	255.5	11.5	221.5	450.3	17.8
PERCENTAGE CHANGE FROM PREVIOUS MONTH						
<b>1996-97</b>						
September	10.4	15.5	3.4	-3.2	10.7	17.8
October	-3.2	-6.8	-27.9	16.3	-9.5	-31.2
November	5.1	6.2	1.6	-7.3	21.8	16.6
December	-3.9	1.4	-8.4	16.9	13.6	7.7
January	-3.7	-8.0	17.5	0.1	-33.5	-28.6
February	4.4	6.6	7.0	-3	1.5	11.5
March	3.5	2.0	-21.3	12.8	26.8	-8.7
April	6.4	7.5	19.6	4.1	-7.4	55.3
May	-2.7	-2.2	-4.3	0.0	15.2	-4.2
June	-1.7	-4.2	-19.8	-0.7	-11.3	47.6
<b>1997-98</b>						
July	-5.3	-3.9	-9.0	11.4	28.6	-2.7
August	2.7	3.1	-3.9	-26.5	-41.1	-27.0
September	-1.7	0.6	-4.3	7.6	47.9	-0.4
October	3.3	4.9	30.2	0.4	11.1	-0.5
November	-4.5	-3.7	-12.8	0.2	-27.3	-17.7



## PUBLICATIONS SOURCE INDEX

.....

- (1) *Australian National Accounts, Quarterly State Details* (Cat. no. 5206.0.40.001)
- (2) *International Merchandise Trade, Australia* (Cat. no. 5422.0) Quarterly
- (3) *Retail Trade, Australia* (Cat. no. 8501.0) Monthly
- (4) *New Motor Vehicles Registrations, Australia, Preliminary* (Cat. no. 9301.0)  
Monthly
- (5) *State Estimates of Private New Capital Expenditure* (Cat. no. 5646.0) Quarterly
- (6) *Tourist Accommodation, Australia* (Cat. no. 8635.0) Quarterly
- (7) *Building Approvals, Australia* (Cat. no. 8731.0) Monthly
- (8) *Building Activity, Australia* (Cat. no. 8752.0) Quarterly
- (8a) *Building Activity, Australia, Dwelling Unit Commencements, Preliminary* (Cat. no. 8750.0) Quarterly
- (9) *Engineering Construction Activity, Australia* (Cat. no. 8762.0) Quarterly
- (10) *Manufacturing Production, Australia, Preliminary* (Cat. no. 8301.0)  
Monthly
- (11) *Livestock Products, Australia* (Cat. no. 7215.0) Monthly
- (12) *Actual and Expected Private Mineral Exploration, Australia* (Cat. no. 8412.0)  
Quarterly
- (13) *Consumer Price Index* (Cat. no. 6401.0) Quarterly
- (14) *Price Index of Materials Used in House Building, Six State Capital Cities and Canberra* (Cat. no. 6408.0) Monthly
- (15) *Price Index of Materials Used in Building Other Than House Building, Six State Capital Cities and Canberra* (Cat. no. 6407.0) Monthly
- (16) *House Price Indexes: Eight Capital Cities* (Cat. no. 6416.0) Quarterly
- (17) *Australian Demographic Statistics* (Cat. no. 3101.0) Quarterly
- (18) *Labour Force, Australia, Preliminary* (Cat. no. 6202.0) Monthly
- (19) *Job Vacancies and Overtime, Australia* (Cat. no. 6354.0) Quarterly
- (20) *Industrial Disputes, Australia* (Cat. no. 6321.0) Monthly
- (21) Unpublished overseas arrival and departure statistics on microfiche
- (22) *Average Weekly Earnings, States and Australia* (Cat. no. 6302.0) Quarterly
- (23) *Award Rates of Pay Indexes, Australia* (Cat. no. 6312.0) Monthly
- (24) *Housing Finance for Owner Occupation, Australia* (Cat. no. 5609.0) Monthly
- (25) Unpublished statistics available from PC AUSSTATS
- (26) *Reserve Bank of Australia Bulletin*







**FOR MORE INFORMATION**

The ABS publishes a wide range of statistics and other information on Australia's economic and social conditions. Details of what is available in various publications and other products can be found in the ABS Catalogue of Publications and Products available from all ABS Offices.

**ABS Products and Services**

Many standard products are available from ABS bookshops located in each State and Territory. In addition to these products, information tailored to the needs of clients can be obtained on a wide range of media by contacting your nearest ABS Office. The ABS also provides a Subscription Service for standard products and some tailored information services.

**National Dial-a-Statistic Line**

0055 86 400

*Steadycom P/L: premium rate 25c/20 secs.*

This number gives 24-hour access, 365 days a year, for a range of important economic statistics including the CPI.

**Internet**

<http://www.abs.gov.au>

A wide range of ABS information is available via the Internet, with basic statistics available for each State, Territory and Australia. We also have Key National Indicators, ABS product release details and other information of general interest.

**Sales and Inquiries**

[client.services@abs.gov.au](mailto:client.services@abs.gov.au)

National Mail Order Service (02) 6252 5249  
Subscription Service 1300 366 323

	<b>Information Inquiries</b>	<b>Bookshop Sales</b>
CANBERRA	(02) 6252 6627	(02) 6207 0326
SYDNEY	(02) 9268 4611	(02) 9268 4620
MELBOURNE	(03) 9615 7755	(03) 9615 7755
BRISBANE	(07) 3222 6351	(07) 3222 6350
PERTH	(08) 9360 5140	(08) 9360 5307
ADELAIDE	(08) 8237 7100	(08) 8237 7582
HOBART	(03) 6222 5800	(03) 6222 5800
DARWIN	(08) 8943 2111	(08) 8943 2111



Client Services, ABS, PO Box 10, Belconnen ACT 2616



2130740002984  
ISSN 1039-8880

RRP \$19.50